

Recombinant Human CER1 Protein, GST-Tagged

Cat. No. CER1-1144H Lot. No. (See product label)

SPECIFICATION

Product Overview	Human CER1 full-length ORF (AAH69491.1, 1 a.a. - 267 a.a.) recombinant protein with GST-tag at N-terminal.
Species	Human
Source	Wheat Germ
Description	This gene encodes a cytokine member of the cysteine knot superfamily, characterized by nine conserved cysteines and a cysteine knot region. The cerberus-related cytokines, together with Dan and DRM/Gremlin, represent a group of bone morphogenetic protein (BMP) antagonists that can bind directly to BMPs and inhibit their activity. [provided by RefSeq, Jul 2008]
Molecular Mass	56.5 kDa
AA Sequence	MHLLLFQLLVLLPLGKTTRHQDGRQNQSSLSPLVLLPRNQRELPTGNHEEAEEKPDLF VAVPHLVGTSPAGEGQRQREKMLSRFRGFWKKPEREMHPSRDSSEPFPPGTQS LIQPIDGMKMEKSPLREEAKKFWHHFMFRKTPASQGVILPIKSHEVHWETCRTVPFS QTITHEGCEKVVQNNLCFGKCGSVHFPGAAQHSHTSCSHCLPAKFTTMHLPLNCT ELSSVIKVVMLVEECQCKVKTEHEDGHILHAGSQDSFIPGVSA
Applications	Enzyme-linked Immunoabsorbent Assay Western Blot (Recombinant protein) Antibody Production Protein Array

 Tel: 1-631-559-9269 1-516-512-3133

 Email: info@creative-biomart.com  Fax: 1-631-938-8127

 45-1 Ramsey Road, Shirley, NY 11967, USA

Storage Store at -80 centigrade. Aliquot to avoid repeated freezing and thawing.

Storage Buffer 50 mM Tris-HCl, 10 mM reduced Glutathione, pH=8.0 in the elution buffer.

GENE INFORMATION

Gene Name CER1 cerberus 1, cysteine knot superfamily, homolog (Xenopus laevis) [Homo sapiens]

Official Symbol CER1

Synonyms CER1; cerberus 1, cysteine knot superfamily, homolog (Xenopus laevis); cerberus 1 (Xenopus laevis) homolog (cysteine knot superfamily); cerberus; DAND4; cerberus-related 1; cerberus-related protein; DAN domain family member 4; MGC96951; MGC119894; MGC119895;

Gene ID 9350

mRNA Refseq NM_005454

Protein Refseq NP_005445

MIM 603777

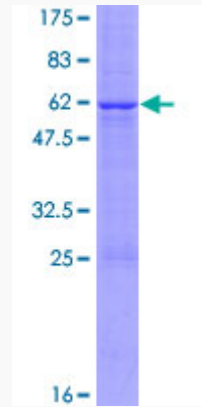
UniProt ID O95813

 Tel: 1-631-559-9269 1-516-512-3133

 Email: info@creative-biomart.com  Fax: 1-631-938-8127

 45-1 Ramsey Road, Shirley, NY 11967, USA

**Quality Control
Testing**



12.5% SDS-PAGE Stained with Coomassie Blue.

 Tel: 1-631-559-9269 1-516-512-3133

 Email: info@creative-biomart.com  Fax: 1-631-938-8127

 45-1 Ramsey Road, Shirley, NY 11967, USA