

## Recombinant Human CER1 Protein, His-tagged

**Cat. No.** CER1-114H    **Lot. No.** (See product label)

### SPECIFICATION

**Product Overview**      Recombinant Human Transforming Growth Factor beta 1 is produced by our Mammalian expression system and the target gene encoding Ala279-Ser390 is expressed.

**Species**                      Human

**Source**                        Human Cells

**ProteinLength**              279-390 a.a.

**Description**                Cerberus 1 is a secreted glycoprotein that forms disulfide-linked homodimers. It is a cytokine member of the DAN domain family of BMP antagonists that includes DAN (DAND1), Gremlin/Drm (DAND2), PRDC (Protein Related to Dan and Cerberus, DAND3), and COCO/Dante (DAND5). DAN family members contain a cysteine knot domain that is homologous to that found in other TGF-beta superfamily ligands. At the onset of gastrulation, Cerberus 1 is transiently expressed in anterior endodermal structures in response to Nodal and Shh. Cerberus 1 binds BMP-4 and Nodal and inhibits their activities. The inhibitory functions of Cerberus favor mesodermal development in the anterior region of the gastrula and suppresses posterior mesodermal differentiation. In chick and Xenopus, Cerberus 1 also regulates, but is not required for embryonic left-right polarization, neurulation, and head and heart induction.

**Form**                            Lyophilized from a 0.2 um filtered solution of 20mM HAc.

 Tel: 1-631-559-9269    1-516-512-3133

 Email: [info@creative-biomart.com](mailto:info@creative-biomart.com)     Fax: 1-631-938-8127

 45-1 Ramsey Road, Shirley, NY 11967, USA

<b>Molecular Mass</b>	Predicted Molecular Weight: 29.19kDa Apparent Molecular Weight: 35-42kDa, reducing conditions.
<b>AA Sequence</b>	Thr18-Ala267
<b>Endotoxin</b>	Less than 0.1 ng/ug (1 EU/ug).
<b>Purity</b>	>90%
<b>Storage</b>	Lyophilized protein should be stored at < -20 centigrade, though stable at room temperature for 3 weeks. Reconstituted protein solution can be stored at 4-7 centigrade for 2-7 days. Aliquots of reconstituted samples are stable at < -20 centigrade for 3 months. Always centrifuge tubes before opening. Do not mix by vortex or pipetting
<b>Reconstitution</b>	It is not recommended to reconstitute to a concentration less than 100µg/ml. Dissolve the lyophilized protein in distilled water. Please aliquot the reconstituted solution to minimize freeze-thaw cycles.
<b>Quality Statement</b>	Purity: >90% as determined by reducing SDS-PAGE.
<b>Shipping</b>	The product is shipped at ambient temperature. Upon receipt, store it immediately at the temperature listed below.

## GENE INFORMATION

<b>Gene Name</b>	CER1 cerberus 1, DAN family BMP antagonist [ Homo sapiens (human) ]
<b>Official Symbol</b>	CER1
<b>Synonyms</b>	Cerberus; Cerberus-Related Protein; DAN Domain Family Member 4; DAND4

 Tel: 1-631-559-9269 1-516-512-3133

 Email: [info@creative-biomart.com](mailto:info@creative-biomart.com)  Fax: 1-631-938-8127

 45-1 Ramsey Road, Shirley, NY 11967, USA

**Gene ID** 9350

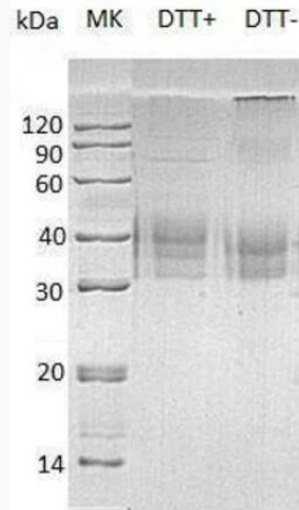
**mRNA Refseq** NM\_005454

**Protein Refseq** NP\_005445.1

**MIM** 603777

**UniProt ID** O95813

**SDS-PAGE**



 Tel: 1-631-559-9269 1-516-512-3133

 Email: [info@creative-biomart.com](mailto:info@creative-biomart.com)  Fax: 1-631-938-8127

 45-1 Ramsey Road, Shirley, NY 11967, USA