

## Recombinant Human CER1 Protein (Thr18-Ala267), C-His tagged

Cat. No. CER1-1603H Lot. No. (See product label)

### SPECIFICATION

<b>Product Overview</b>	Recombinant human CER1 (Thr18-Ala267) fused with the C-terminal His tag was expressed in Mammalian cells.
<b>Species</b>	Human
<b>Source</b>	Mammalian Cells
<b>ProteinLength</b>	Thr18-Ala267
<b>Form</b>	Lyophilized powder/frozen liquid
<b>Molecular Mass</b>	27.5 kDa
<b>Purity</b>	>90% as determined by SDS-PAGE.
<b>Notes</b>	For research use only.
<b>Storage</b>	Use a manual defrost freezer and avoid repeated freeze thaw cycles. Store at 2 to 8 centigrade for one week. Store at -20 to -80 centigrade for twelve months from the date of receipt.
<b>Storage Buffer</b>	Supplied as solution form in PBS or lyophilized from PBS.
<b>Reconstitution</b>	Reconstitute in sterile water for a stock solution.

 Tel: 1-631-559-9269 1-516-512-3133

 Email: [info@creative-biomart.com](mailto:info@creative-biomart.com)  Fax: 1-631-938-8127

 45-1 Ramsey Road, Shirley, NY 11967, USA

**Shipping** They are shipped out with dry ice/blue ice unless customers require otherwise.

## GENE INFORMATION

**Gene Name** CER1 cerberus 1, cysteine knot superfamily, homolog (Xenopus laevis) [ Homo sapiens (human) ]

**Official Symbol** CER1

**Synonyms** CER1; cerberus 1, cysteine knot superfamily, homolog (Xenopus laevis); cerberus 1 (Xenopus laevis) homolog (cysteine knot superfamily); cerberus; DAND4; cerberus-related 1; cerberus-related protein; DAN domain family member 4; MGC96951; MGC119894; MGC119895;

**Gene ID** 9350

**mRNA Refseq** NM\_005454

**Protein Refseq** NP\_005445

**MIM** 603777

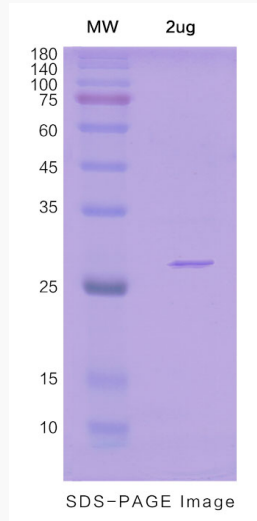
**UniProt ID** O95813

 Tel: 1-631-559-9269 1-516-512-3133

 Email: [info@creative-biomart.com](mailto:info@creative-biomart.com)  Fax: 1-631-938-8127

 45-1 Ramsey Road, Shirley, NY 11967, USA

**SDS-PAGE**



 Tel: 1-631-559-9269 1-516-512-3133

 Email: [info@creative-biomart.com](mailto:info@creative-biomart.com)  Fax: 1-631-938-8127

 45-1 Ramsey Road, Shirley, NY 11967, USA