

Recombinant Human CERK Protein, GST-Tagged

Cat. No. CERK-1147H Lot. No. (See product label)

SPECIFICATION

Product Overview	Human CERK full-length ORF (AAH04278, 1 a.a. - 201 a.a.) recombinant protein with GST-tag at N-terminal.
Species	Human
Source	Wheat Germ
Description	CERK converts ceramide to ceramide 1-phosphate (C1P), a sphingolipid metabolite. Both CERK and C1P have been implicated in various cellular processes, including proliferation, apoptosis, phagocytosis, and inflammation (Kim et al., 2006 [PubMed 16488390]).[supplied by OMIM, Mar 2008]
Molecular Mass	47.85 kDa
AA Sequence	MQRGPASGDPREGPPRQRREGCWGLHTCLITAARLRQSGWEHDLGVCSGSTDDK LWKLAVCKALASLLLLKCQIPMLYIDAKCLTQPGLGAVRRKLAIRGGGAGPGLPQDS SEAGPEVCTRGPDL SLSFLHTEFSIFIEHLVLLSQSSVNCVSDVCLLPRSHDGLVSS AARGLRRPEDSSRKAFLPRSPGHPSIVYYVLV
Applications	Enzyme-linked Immunoabsorbent Assay Western Blot (Recombinant protein) Antibody Production Protein Array
Storage	Store at -80 centigrade. Aliquot to avoid repeated freezing and thawing.

 Tel: 1-631-559-9269 1-516-512-3133

 Email: info@creative-biomart.com  Fax: 1-631-938-8127

 45-1 Ramsey Road, Shirley, NY 11967, USA

Storage Buffer 50 mM Tris-HCl, 10 mM reduced Glutathione, pH=8.0 in the elution buffer.

GENE INFORMATION

Gene Name CERK ceramide kinase [Homo sapiens]

Official Symbol CERK

Synonyms CERK; ceramide kinase; dA59H18.2; dA59H18.3; DKFZp434E0211; FLJ21430; FLJ23239; hCERK; KIAA1646; LK4; lipid kinase 4; lipid kinase LK4; acylsphingosine kinase; MGC131878;

Gene ID 64781

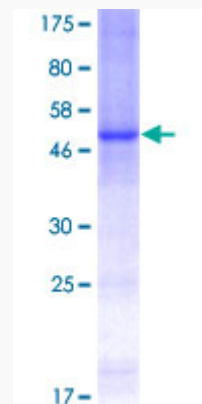
mRNA Refseq NM_022766

Protein Refseq NP_073603

MIM 610307

UniProt ID Q8TCT0

Quality Control Testing



Tel: 1-631-559-9269 1-516-512-3133

Email: info@creative-biomart.com Fax: 1-631-938-8127

45-1 Ramsey Road, Shirley, NY 11967, USA



12.5% SDS-PAGE Stained with Coomassie Blue.

 Tel: 1-631-559-9269 1-516-512-3133

 Email: info@creative-biomart.com  Fax: 1-631-938-8127

 45-1 Ramsey Road, Shirley, NY 11967, USA