

Recombinant Human CES1 Protein (His19-Glu562), C-His tagged

Cat. No. CES1-0998H Lot. No. (See product label)

SPECIFICATION

Product Overview	Recombinant human CES1 (His19-Glu562) fused with the C-terminal His tag was expressed in Mammalian cells.
Species	Human
Source	Mammalian Cells
ProteinLength	His19-Glu562
Form	Lyophilized powder/frozen liquid
Molecular Mass	59.84 kDa
Purity	>90% as determined by SDS-PAGE.
Notes	For research use only.
Storage	Use a manual defrost freezer and avoid repeated freeze thaw cycles. Store at 2 to 8 centigrade for one week. Store at -20 to -80 centigrade for twelve months from the date of receipt.
Storage Buffer	Supplied as solution form in PBS or lyophilized from PBS.
Reconstitution	Reconstitute in sterile water for a stock solution.

 Tel: 1-631-559-9269 1-516-512-3133

 Email: info@creative-biomart.com  Fax: 1-631-938-8127

 45-1 Ramsey Road, Shirley, NY 11967, USA

Shipping They are shipped out with dry ice/blue ice unless customers require otherwise.

GENE INFORMATION

Gene Name [CES1 carboxylesterase 1 \[Homo sapiens \(human\) \]](#)

Official Symbol [CES1](#)

Synonyms

CES1; carboxylesterase 1; carboxylesterase 1 (monocyte/macrophage serine esterase 1); liver carboxylesterase 1; CEH; CES1A1; CES1A2; CES2; HMSE; HMSE1; human monocyte/macrophage serine esterase 1; SES1; egasyn; serine esterase 1; retinyl ester hydrolase; cocaine carboxylesterase; triacylglycerol hydrolase; carboxylesterase 2 (liver); brain carboxylesterase hBr1; cholesteryl ester hydrolase; monocyte/macrophage serine esterase; methylumbelliferyl-acetate deacetylase 1; acyl coenzyme A:cholesterol acyltransferase; acyl-coenzyme A:cholesterol acyltransferase; REH; TGH; ACAT; PCE-1; MGC117365;

Gene ID [1066](#)

mRNA Refseq [NM_001025194](#)

Protein Refseq [NP_001020365](#)

MIM [138972](#)

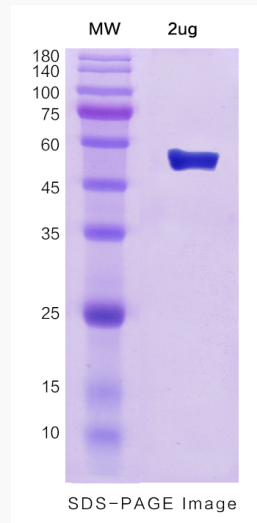
UniProt ID [P23141](#)

 Tel: 1-631-559-9269 1-516-512-3133

 Email: info@creative-biomart.com  Fax: 1-631-938-8127

 45-1 Ramsey Road, Shirley, NY 11967, USA

SDS-PAGE



 Tel: 1-631-559-9269 1-516-512-3133

 Email: info@creative-biomart.com  Fax: 1-631-938-8127

 45-1 Ramsey Road, Shirley, NY 11967, USA