

Recombinant Human CES1 protein, His-tagged

Cat. No. CES1-654H Lot. No. (See product label)

SPECIFICATION

Product Overview	Recombinant Human CES1 protein(P23141)(18-567aa), fused with C-terminal His tag, was expressed in Insect cells.
Species	Human
Source	Insect cells
ProteinLength	18-567aa
Form	If the delivery form is liquid, the default storage buffer is Tris/PBS-based buffer, 5%-50% glycerol. If the delivery form is lyophilized powder, the buffer before lyophilization is Tris/PBS-based buffer, 6% Trehalose, pH 8.0.
Molecular Mass	66.3 kDa
Purity	Greater than 85% as determined by SDS-PAGE.
Storage	Store at -20°C/-80°C upon receipt, aliquoting is necessary for mutiple use. Avoid repeated freeze-thaw cycles.
Reconstitution	We recommend that this vial be briefly centrifuged prior to opening to bring the contents to the bottom. Please reconstitute protein in deionized sterile water to a concentration of 0.1-1.0 mg/mL. We recommend to add 5-50% of glycerol (final concentration) and aliquot for long-term storage at -20°C/-80°C.

 Tel: 1-631-559-9269 1-516-512-3133

 Email: info@creative-biomart.com  Fax: 1-631-938-8127

 45-1 Ramsey Road, Shirley, NY 11967, USA

AA Sequence

GHPSSPPVVDTVHGKVLGKFVSLEGFAQPVAIFLGIPFAKPPLGPLRFTPPQPAEPW
 SFVKNATSYPPMCTQDPKAGQLLSELFTRKENIPLKLSLSEDCLYLNITPADLTKKRN
 LPVMVWIHGGGLMVGAASTYDGLALAAHENVVVVTIQYRLGIWGGFFSTGDEHSRGN
 WGHLDQVAALRWVQDNIAFSGGNPGSVTIFGESAGGESVSVLVLSPLAKNLFHRAIS
 ESGVALTSVLVKKGDVKPLAEQIAITAGCKTTTSAVMVHCLRQKTEEELLETTLKMKF
 LSLDLQGDPPRESQPLLGTVIDGMLLLKTPEELQAERNFHTVPYMGVINGKQEFGWLIP
 MQLMSYPLSEGQLDQKTAMSLWKSYPVLCIAKELIPEATEKYLGTTDDTVKKKDLF
 LDLIADVMFGVPSVIVARNHRDAGAPTYMYEFQYRPSFSSDMKPKTVIGDHGDELFS
 VFGAPFLKEGASEEEIRLSKMVMKFWANFARNGNPNNGEGLPHWPEYNQKEGYLQI
 GANTQAAQKLKDKKEVAFWTNLFKAKAVEKPPQTEHIEL

GENE INFORMATION

Gene Name [CES1 carboxylesterase 1 \[Homo sapiens \]](#)

Official Symbol [CES1](#)

Synonyms

CES1; carboxylesterase 1; carboxylesterase 1 (monocyte/macrophage serine esterase 1); liver carboxylesterase 1; CEH; CES1A1; CES1A2; CES2; HMSE; HMSE1; human monocyte/macrophage serine esterase 1; SES1; egasyn; serine esterase 1; retinyl ester hydrolase; cocaine carboxylesterase; triacylglycerol hydrolase; carboxylesterase 2 (liver); brain carboxylesterase hBr1; cholesteryl ester hydrolase; monocyte/macrophage serine esterase; methylumbelliferyl-acetate deacetylase 1; acyl coenzyme A:cholesterol acyltransferase; acyl-coenzyme A:cholesterol acyltransferase; REH; TGH; ACAT; PCE-1; MGC117365;

Gene ID [1066](#)

mRNA Refseq [NM_001025194](#)

 Tel: 1-631-559-9269 1-516-512-3133

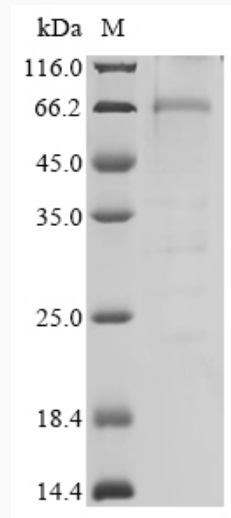
 Email: info@creative-biomart.com  Fax: 1-631-938-8127

 45-1 Ramsey Road, Shirley, NY 11967, USA

Protein Refseq NP_001020365

UniProt ID P23141

SDS-PAGE



 Tel: 1-631-559-9269 1-516-512-3133

 Email: info@creative-biomart.com  Fax: 1-631-938-8127

 45-1 Ramsey Road, Shirley, NY 11967, USA