

## Recombinant Human CES1 Protein, His-tagged

**Cat. No.** CES1-912H    **Lot. No.** (See product label)

### SPECIFICATION

<b>Product Overview</b>	Recombinant Human CES1 Protein(Gly18~Leu567), fused with N-terminal His tag, was expressed in HEK293.
<b>Species</b>	Human
<b>Source</b>	HEK293
<b>ProteinLength</b>	Gly18~Leu567
<b>Form</b>	10mM PBS, pH7.6, containing 5% trehalos.
<b>Molecular Mass</b>	62kDa as determined by SDS-PAGE reducing conditions.
<b>Endotoxin</b>	<1.0EU per 1µg (determined by the LAL method)
<b>Purity</b>	>95%
<b>Storage</b>	Avoid repeated freeze/thaw cycles. Store at 2-8°C for one month. Aliquot and store at -80°C for 12 months.
<b>Reconstitution</b>	Reconstitute in 10mM PBS (pH7.6) to a concentration of 0.1-1.0 mg/mL. Do not vortex.

### GENE INFORMATION

 Tel: 1-631-559-9269    1-516-512-3133

 Email: [info@creative-biomart.com](mailto:info@creative-biomart.com)     Fax: 1-631-938-8127

 45-1 Ramsey Road, Shirley, NY 11967, USA

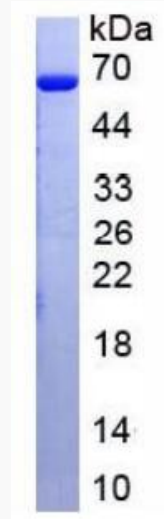
<b>Gene Name</b>	CES1 carboxylesterase 1 [ Homo sapiens ]
<b>Official Symbol</b>	CES1
<b>Synonyms</b>	CES1; carboxylesterase 1; carboxylesterase 1 (monocyte/macrophage serine esterase 1); liver carboxylesterase 1; CEH; CES1A1; CES1A2; CES2; HMSE; HMSE1; human monocyte/macrophage serine esterase 1; SES1; egasyn; serine esterase 1; retinyl ester hydrolase; cocaine carboxylesterase; triacylglycerol hydrolase; carboxylesterase 2 (liver); brain carboxylesterase hBr1; cholesteryl ester hydrolase; monocyte/macrophage serine esterase; methylumbelliferyl-acetate deacetylase 1; acyl coenzyme A:cholesterol acyltransferase; acyl-coenzyme A:cholesterol acyltransferase; REH; TGH; ACAT; PCE-1; MGC117365
<b>Gene ID</b>	1066
<b>mRNA Refseq</b>	NM_001025194
<b>Protein Refseq</b>	NP_001020365
<b>MIM</b>	114835
<b>UniProt ID</b>	P23141

 Tel: 1-631-559-9269 1-516-512-3133

 Email: [info@creative-biomart.com](mailto:info@creative-biomart.com)  Fax: 1-631-938-8127

 45-1 Ramsey Road, Shirley, NY 11967, USA

SDS-PAGE



 Tel: 1-631-559-9269 1-516-512-3133

 Email: [info@creative-biomart.com](mailto:info@creative-biomart.com)  Fax: 1-631-938-8127

 45-1 Ramsey Road, Shirley, NY 11967, USA