

# Recombinant Full Length Human CES3 Protein, C-Flag-tagged

Cat. No. CES3-1922HFL Lot. No. (See product label)

## SPECIFICATION

<b>Product Overview</b>	Recombinant Full Length Human CES3 Protein, fused to Flag-tag at C-terminus, was expressed in Mammalian cells.
<b>Species</b>	Human
<b>Source</b>	Mammalian Cells
<b>Description</b>	This gene encodes a member of the carboxylesterase large family. The family members are responsible for the hydrolysis or transesterification of various xenobiotics, such as cocaine and heroin, and endogenous substrates with ester, thioester, or amide bonds. They may participate in fatty acyl and cholesterol ester metabolism, and may play a role in the blood-brain barrier system. This gene is expressed in several tissues, particularly in colon, trachea and in brain, and the protein participates in colon and neural drug metabolism. Multiple alternatively spliced transcript variants encoding distinct isoforms have been reported, but the biological validity and/or full-length nature of some variants have not been determined.
<b>Form</b>	25 mM Tris HCl, pH 7.3, 100 mM glycine, 10% glycerol.
<b>Molecular Mass</b>	62.1 kDa
<b>AA Sequence</b>	MERAVRVESGVLVGVVCLLLACPATATGPEVAQPEVDTTLGRVVRGRQVGVKGTDR LVNVFLGIPFAQPPL GPDRFSAPHPAQPWEGVRDASTAPPMCLQDVESMNSSRFV LNGKQQIFSVSEDCLVLNVYSPA EVPAGSG RPVMVWVHGGALITGAATSYDGSALA AYGDVVVVTVQYRLGVLGFFSTGDEHAPGNQGFLDVVAALRWVQ ENIAPFGGDLN

 Tel: 1-631-559-9269 1-516-512-3133

 Email: [info@creative-biomart.com](mailto:info@creative-biomart.com)  Fax: 1-631-938-8127

 45-1 Ramsey Road, Shirley, NY 11967, USA

CVTVFGGSAGGSIISGLVLSPPVAAGLFHRAITQSGVITTPGIIDSHPWPLAQKIAN  
 TLA C S S S S P A E M V Q C L Q Q K E G E E L V L S K K L K N T I Y P L T V D G T V F P K S P K E L L K E K P F H S V  
 P F L M G V N N H E F S W L I P R G W G L L D T M E Q M S R E D M L A I S T P V L T S L D V P P E M M P T V I D  
 E Y L G S N S D A Q A K C Q A F Q E F M G D V F I N V P T V S F S R Y L R D S G S P V F F Y E F Q H R P S S F A  
 K I K P A W V K A D H G A E G A F V F G G P F L M D E S S R L A F P E A T E E E K Q L S L T M M A Q W T H F A  
 R T G D P N S K A L P P W P Q F N Q A E Q Y L E I N P V P R A G Q K F R E A W M Q F W S E T L P S K I Q Q W H  
 Q K Q K N R K A Q E D L T R T R P L E Q K L I S E E D L A A N D I L D Y K D D D D K V

**Purity** > 80% as determined by SDS-PAGE and Coomassie blue staining.

**Stability** Stable for 12 months from the date of receipt of the product under proper storage and handling conditions. Avoid repeated freeze-thaw cycles.

**Storage** Store at -80 centigrade.

**Concentration** >50 ug/mL as determined by microplate BCA method.

**Preparation** Recombinant protein was captured through anti-DDK affinity column followed by conventional chromatography steps.

**Protein Families** Druggable Genome

**Full Length** Full L.

## GENE INFORMATION

**Gene Name** CES3 carboxylesterase 3 [ Homo sapiens (human) ]

**Official Symbol** CES3

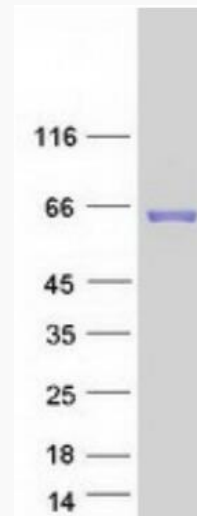
**Synonyms** ES31

 Tel: 1-631-559-9269 1-516-512-3133

 Email: [info@creative-biomart.com](mailto:info@creative-biomart.com)  Fax: 1-631-938-8127

 45-1 Ramsey Road, Shirley, NY 11967, USA

Gene ID	23491
mRNA Refseq	NM_024922.6
Protein Refseq	NP_079198.2
MIM	605279
UniProt ID	Q6UWW8



Coomassie blue staining of purified CES3 protein.

Tel: 1-631-559-9269 1-516-512-3133

Email: [info@creative-biomart.com](mailto:info@creative-biomart.com) Fax: 1-631-938-8127

45-1 Ramsey Road, Shirley, NY 11967, USA