

Recombinant Human CETN1 Protein, GST-Tagged

Cat. No. CETN1-1153H Lot. No. (See product label)

SPECIFICATION

Product Overview	Human CETN1 full-length ORF (NP_004057.1, 1 a.a. - 172 a.a.) recombinant protein with GST-tag at N-terminal.
Species	Human
Source	Wheat Germ
Description	The protein encoded by this gene plays important roles in the determination of centrosome position and segregation, and in the process of microtubule severing. This protein is localized to the centrosome of interphase cells, and redistributes to the region of the spindle poles during mitosis, reflecting the dynamic behavior of the centrosome during the cell cycle. [provided by RefSeq, Jan 2015]
Molecular Mass	46 kDa
AA Sequence	MASGFKKPSAASTGQKRKRVAPKPELTEDQKQEVREAFDLFDVDGSGTIDAKELKVA MRALGFEPKKEEMKKMISEVDREGTGKISFNDFLAVMTQKMSEKDTKEEILKAFRLF DDDETGKISFKNLKRVANELGENLTDEELQEMIDEADRDGDGEVNNEEFLRIMKKTS LY
Applications	Enzyme-linked Immunoabsorbent Assay Western Blot (Recombinant protein) Antibody Production Protein Array

 Tel: 1-631-559-9269 1-516-512-3133

 Email: info@creative-biomart.com  Fax: 1-631-938-8127

 45-1 Ramsey Road, Shirley, NY 11967, USA

Storage Store at -80 centigrade. Aliquot to avoid repeated freezing and thawing.

Storage Buffer 50 mM Tris-HCl, 10 mM reduced Glutathione, pH=8.0 in the elution buffer.

GENE INFORMATION

Gene Name CETN1 centrin, EF-hand protein, 1 [Homo sapiens]

Official Symbol CETN1

Synonyms CETN1; centrin, EF-hand protein, 1; CETN; centrin-1; CEN1; caltractin; EF-hand protein; calcium binding protein;

Gene ID 1068

mRNA Refseq NM_004066

Protein Refseq NP_004057

MIM 603187

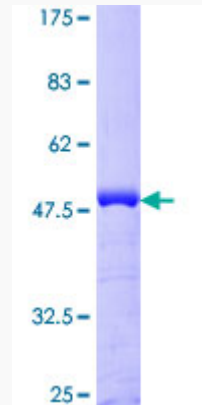
UniProt ID Q12798

 Tel: 1-631-559-9269 1-516-512-3133

 Email: info@creative-biomart.com  Fax: 1-631-938-8127

 45-1 Ramsey Road, Shirley, NY 11967, USA

**Quality Control
Testing**



12.5% SDS-PAGE Stained with Coomassie Blue.

 Tel: 1-631-559-9269 1-516-512-3133

 Email: info@creative-biomart.com  Fax: 1-631-938-8127

 45-1 Ramsey Road, Shirley, NY 11967, USA