

Recombinant Human CETN1 protein

Cat. No. CETN1-3321H Lot. No. (See product label)

SPECIFICATION

Product Overview	Recombinant Human CETN1protein(Q12798)(172aa) was expressed in E. coli.
Species	Human
Source	E.coli
ProteinLength	172aa
Tag	Non
Form	20mM Tris.Cl, 50mM NaCl, 50% Glycerol, pH7.0.
Molecular Mass	19.6kDa
Storage	Store at -80°C and avoid repeated freeze-thaw cycles.
Reconstitution	It is recommended that sterile water be added to the vial to prepare a stock solution of 0.2 ug/ul. Centrifuge the vial at 4°C before opening to recover the entire contents.

GENE INFORMATION

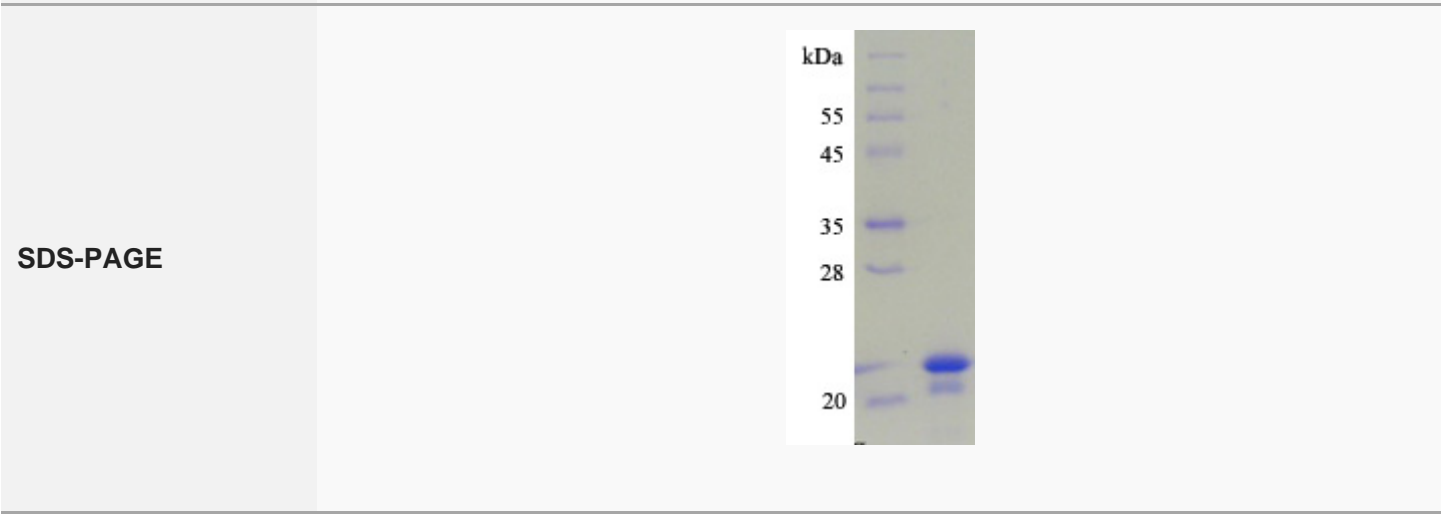
Gene Name	CETN1 centrin, EF-hand protein, 1 [Homo sapiens]
Official Symbol	CETN1

 Tel: 1-631-559-9269 1-516-512-3133

 Email: info@creative-biomart.com  Fax: 1-631-938-8127

 45-1 Ramsey Road, Shirley, NY 11967, USA

Synonyms	CETN1; centrin, EF-hand protein, 1; CETN; centrin-1; CEN1; caltractin; EF-hand protein; calcium binding protein;
Gene ID	1068
mRNA Refseq	NM_004066
Protein Refseq	NP_004057
MIM	603187
UniProt ID	Q12798



Tel: 1-631-559-9269 1-516-512-3133

Email: info@creative-biomart.com Fax: 1-631-938-8127

45-1 Ramsey Road, Shirley, NY 11967, USA