

Recombinant Human CETN1 Protein, Myc/DDK-tagged, C13 and N15-labeled

Cat. No. CETN1-4724H Lot. No. (See product label)

SPECIFICATION

Product Overview	CETN1 MS Standard C13 and N15-labeled recombinant protein (NP_004057) with a C-terminal MYC/DDK tag, was expressed in HEK293 cells.
Species	Human
Source	HEK293
Description	<p>The protein encoded by this gene plays important roles in the determination of centrosome position and segregation, and in the process of microtubule severing.</p> <p>This protein is localized to the centrosome of interphase cells, and redistributes to the region of the spindle poles during mitosis, reflecting the dynamic behavior of the centrosome during the cell cycle.</p>
Molecular Mass	19.6 kDa
AA Sequence	MASGFKKPSAASTGQKRKVAPKPELTEDQKQEVREAFDLFDVDGSGTIDAKELKVA MRALGFEPKKEEMKKMISEVDREGTGKISFNDFLAVMTQKMSEKDTKEEILKAFRLF DDDETGKISFKNLKRVANELGENLTDEELQEMIDEADRDGDGEVNEEEFLRIMKKTS LYTRTRPLEQKLISEEDLAANDILDYKDDDDKV
Purity	> 80% as determined by SDS-PAGE and Coomassie blue staining
Stability	Stable for 3 months from receipt of products under proper storage and handling conditions.

 Tel: 1-631-559-9269 1-516-512-3133

 Email: info@creative-biomart.com  Fax: 1-631-938-8127

 45-1 Ramsey Road, Shirley, NY 11967, USA

Storage	Store at -80 centigrade. Avoid repeated freeze-thaw cycles.
----------------	---

Concentration	50 µg/mL as determined by BCA
----------------------	-------------------------------

Storage Buffer	100 mM glycine, 25 mM Tris-HCl, pH 7.3.
-----------------------	---

GENE INFORMATION

Gene Name	CETN1 centrin 1 [Homo sapiens (human)]
------------------	--

Official Symbol	CETN1
------------------------	-------

Synonyms	CETN1; centrin, EF-hand protein, 1; CETN; centrin-1; CEN1; caltractin; EF-hand protein; calcium binding protein;
-----------------	--

Gene ID	1068
----------------	------

mRNA Refseq	NM_004066
--------------------	-----------

Protein Refseq	NP_004057
-----------------------	-----------

MIM	603187
------------	--------

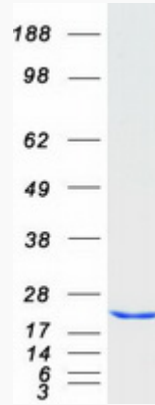
UniProt ID	Q12798
-------------------	--------

 Tel: 1-631-559-9269 1-516-512-3133

 Email: info@creative-biomart.com  Fax: 1-631-938-8127

 45-1 Ramsey Road, Shirley, NY 11967, USA

SDS-PAGE



 Tel: 1-631-559-9269 1-516-512-3133

 Email: info@creative-biomart.com  Fax: 1-631-938-8127

 45-1 Ramsey Road, Shirley, NY 11967, USA