

Recombinant Human CETN2 Protein, GST-Tagged

Cat. No. CETN2-1156H Lot. No. (See product label)

SPECIFICATION

Product Overview	Human CETN2 full-length ORF (AAH05334, 1 a.a. - 172 a.a.) recombinant protein with GST-tag at N-terminal.
Species	Human
Source	Wheat Germ
Description	Caltractin belongs to a family of calcium-binding proteins and is a structural component of the centrosome. The high level of conservation from algae to humans and its association with the centrosome suggested that caltractin plays a fundamental role in the structure and function of the microtubule-organizing center, possibly required for the proper duplication and segregation of the centrosome. [provided by RefSeq, Jul 2008]
Molecular Mass	44.66 kDa
AA Sequence	MASNFKKANMASSSQKRKRMSPKPELTEEQKQEIREAFDLFDADGTGTIDVKELKVA MRALGFEPKKEEIKKMISEIDKEGTGKMNFGDFLVTMTQKMSEKDTKEEILKAFKLF DDETGKISFKNLKRVAKELGENLTDEELQEMIDEADRDGDGEVSEQEFLRIMKKTSL Y
Applications	Enzyme-linked Immunoabsorbent Assay Western Blot (Recombinant protein) Antibody Production Protein Array

 Tel: 1-631-559-9269 1-516-512-3133

 Email: info@creative-biomart.com  Fax: 1-631-938-8127

 45-1 Ramsey Road, Shirley, NY 11967, USA

Storage Store at -80 centigrade. Aliquot to avoid repeated freezing and thawing.

Storage Buffer 50 mM Tris-HCl, 10 mM reduced Glutathione, pH=8.0 in the elution buffer.

GENE INFORMATION

Gene Name CETN2 centrin, EF-hand protein, 2 [Homo sapiens]

Official Symbol CETN2

Synonyms CETN2; centrin, EF-hand protein, 2; CALT; centrin-2; CEN2; caltractin (20kD calcium-binding protein);

Gene ID 1069

mRNA Refseq NM_004344

Protein Refseq NP_004335

MIM 300006

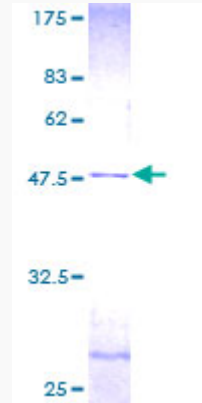
UniProt ID P41208

 Tel: 1-631-559-9269 1-516-512-3133

 Email: info@creative-biomart.com  Fax: 1-631-938-8127

 45-1 Ramsey Road, Shirley, NY 11967, USA

**Quality Control
Testing**



12.5% SDS-PAGE Stained with Coomassie Blue.

 Tel: 1-631-559-9269 1-516-512-3133

 Email: info@creative-biomart.com  Fax: 1-631-938-8127

 45-1 Ramsey Road, Shirley, NY 11967, USA