

Recombinant Human CETN3 Protein, GST-Tagged

Cat. No. CETN3-1158H Lot. No. (See product label)

SPECIFICATION

Product Overview Human CETN3 full-length ORF (NP_004356.2, 1 a.a. - 167 a.a.) recombinant protein with GST-tag at N-terminal.

Species Human

Source Wheat Germ

Description

The protein encoded by this gene contains four EF-hand calcium binding domains, and is a member of the centrin protein family. Centrins are evolutionarily conserved proteins similar to the CDC31 protein of *S. cerevisiae*. Yeast CDC31 is located at the centrosome of interphase and mitotic cells, where it plays a fundamental role in centrosome duplication and separation. Multiple forms of the proteins similar to the yeast centrin have been identified in human and other mammalian cells, some of which have been shown to be associated with centrosome fractions. This protein appears to be one of the most abundant centrins associated with centrosome, which suggests a similar function to its yeast counterpart. Alternatively spliced transcript variants encoding different isoforms have been found for this gene. [provided by RefSeq, Jul 2014]

Molecular Mass 45.9 kDa

AA Sequence

MSLALRSELVVDKTKRKKRRELSEEQKQEIKDAFELFDTDKDEAIDYHELVKAMRAL
GFDVKKADVLLKLDYDREATGKITFEDFNEVVTDWILERPHEEILKAFKLFDDDDDS
GKISLRNLRRVARELGENMSDEELRAMIEEFDKDGDGEINQEEFIAIMTGD

 Tel: 1-631-559-9269 1-516-512-3133

 Email: info@creative-biomart.com  Fax: 1-631-938-8127

 45-1 Ramsey Road, Shirley, NY 11967, USA

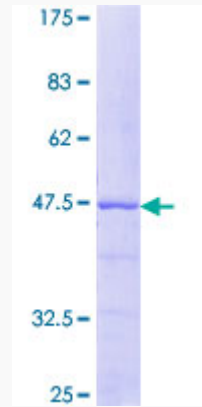
Applications	Enzyme-linked Immunoabsorbent Assay Western Blot (Recombinant protein) Antibody Production Protein Array
Storage	Store at -80 centigrade. Aliquot to avoid repeated freezing and thawing.
Storage Buffer	50 mM Tris-HCl, 10 mM reduced Glutathione, pH=8.0 in the elution buffer.
GENE INFORMATION	
Gene Name	CETN3 centrin, EF-hand protein, 3 [Homo sapiens]
Official Symbol	CETN3
Synonyms	CETN3; centrin, EF-hand protein, 3; centrin, EF hand protein, 3 (CDC31 yeast homolog); centrin-3; CDC31 yeast homolog; CEN3; EF hand superfamily member; EF-hand superfamily member; centrin, EF-hand protein, 3 (CDC31 homolog, yeast); MGC12502; MGC138245;
Gene ID	1070
mRNA Refseq	NM_004365
Protein Refseq	NP_004356
MIM	602907
UniProt ID	O15182

 Tel: 1-631-559-9269 1-516-512-3133

 Email: info@creative-biomart.com  Fax: 1-631-938-8127

 45-1 Ramsey Road, Shirley, NY 11967, USA

**Quality Control
Testing**



12.5% SDS-PAGE Stained with Coomassie Blue.

 Tel: 1-631-559-9269 1-516-512-3133

 Email: info@creative-biomart.com  Fax: 1-631-938-8127

 45-1 Ramsey Road, Shirley, NY 11967, USA