

# Recombinant Human CETN3 Protein, Myc/DDK-tagged, C13 and N15-labeled

Cat. No. CETN3-4395H Lot. No. (See product label)

## SPECIFICATION

<b>Product Overview</b>	CETN3 MS Standard C13 and N15-labeled recombinant protein (NP_004356) with a C-terminal MYC/DDK tag, was expressed in HEK293 cells.
<b>Species</b>	Human
<b>Source</b>	HEK293
<b>Description</b>	The protein encoded by this gene contains four EF-hand calcium binding domains, and is a member of the centrin protein family. Centrins are evolutionarily conserved proteins similar to the CDC31 protein of <i>S. cerevisiae</i> . Yeast CDC31 is located at the centrosome of interphase and mitotic cells, where it plays a fundamental role in centrosome duplication and separation. Multiple forms of the proteins similar to the yeast centrin have been identified in human and other mammalian cells, some of which have been shown to be associated with centrosome fractions. This protein appears to be one of the most abundant centrins associated with centrosome, which suggests a similar function to its yeast counterpart. Alternatively spliced transcript variants encoding different isoforms have been found for this gene.
<b>Molecular Mass</b>	19.6 kDa
<b>AA Sequence</b>	MSLALRSELVVDKTKRKKRRELSEEQKQEIKDAFELFDTDKDEAIDYHELVKAMRAL GFDVKKADVLLKLDYDREATGKITFEDFNEVVTDWILERPHEEILKAFKLFDDDDDS GKISLRNLRRVARELGENMSDEELRAMIEEFDKDGDGEINQEEFIAIMTGDITRTRPL

 Tel: 1-631-559-9269 1-516-512-3133

 Email: [info@creative-biomart.com](mailto:info@creative-biomart.com)  Fax: 1-631-938-8127

 45-1 Ramsey Road, Shirley, NY 11967, USA

EQKLISEEDLAANDILDYKDDDDKV

**Purity** > 80% as determined by SDS-PAGE and Coomassie blue staining

**Stability** Stable for 3 months from receipt of products under proper storage and handling conditions.

**Storage** Store at -80 centigrade. Avoid repeated freeze-thaw cycles.

**Concentration** 50 µg/mL as determined by BCA

**Storage Buffer** 100 mM glycine, 25 mM Tris-HCl, pH 7.3.

## GENE INFORMATION

**Gene Name** [CETN3 centrin 3 \[ Homo sapiens \(human\) \]](#)

**Official Symbol** [CETN3](#)

**Synonyms** CETN3; centrin, EF-hand protein, 3; centrin, EF hand protein, 3 (CDC31 yeast homolog); centrin-3; CDC31 yeast homolog; CEN3; EF hand superfamily member; EF-hand superfamily member; centrin, EF-hand protein, 3 (CDC31 homolog, yeast); MGC12502; MGC138245;

**Gene ID** [1070](#)

**mRNA Refseq** [NM\\_004365](#)

**Protein Refseq** [NP\\_004356](#)

**MIM** [602907](#)

 Tel: 1-631-559-9269 1-516-512-3133

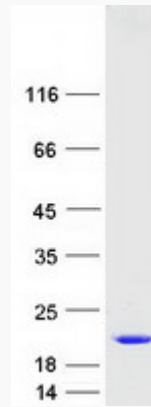
 Email: [info@creative-biomart.com](mailto:info@creative-biomart.com)  Fax: 1-631-938-8127

 45-1 Ramsey Road, Shirley, NY 11967, USA

UniProt ID

O15182

SDS-PAGE



 Tel: 1-631-559-9269 1-516-512-3133

 Email: [info@creative-biomart.com](mailto:info@creative-biomart.com)  Fax: 1-631-938-8127

 45-1 Ramsey Road, Shirley, NY 11967, USA