

## Recombinant Human CETP Protein, GST-Tagged

Cat. No. CETP-1160H Lot. No. (See product label)

### SPECIFICATION

**Product Overview** Human CETP full-length ORF (AAH25739.1, 1 a.a. - 493 a.a.) recombinant protein with GST-tag at N-terminal.

**Species** Human

**Source** Wheat Germ

**Description** The protein encoded by this gene is found in plasma, where it is involved in the transfer of cholesteryl ester from high density lipoprotein (HDL) to other lipoproteins. Defects in this gene are a cause of hyperalphalipoproteinemia 1 (HALP1). Two transcript variants encoding different isoforms have been found for this gene. [provided by RefSeq, Oct 2013]

**Molecular Mass** 79.97 kDa

**AA Sequence**

```

MLAATVLTALLGNAHACSKGTSHEAGIVCRITKPALLVLNHETAKVIQTAQFRASYP
DITGEKAMMLLGQVKYGLHNIQISHLSIASSQVELVEAKSIDVSIQNVSVVFKGTLKYG
YTTAWWLIGIDQSIDFEIDSAIDLQINTQLTCDSGRVRTDAPDCYLSFHKLLLHLQGER
EPGWIKQLFTNFISFTLKLVLKGQICKEINVISNIMADVFVQTRAASILSDGDIGVDISLTG
DPVITASYLESHHKGHFIYKNVSEDLPLPTFSPTLLGDSRMLYFWFSERVFHSLAKVA
FQDGRMLSLMGDEFKAVLETWGFNTNQEIQEVVGGFPSQAQVTVHCLKMPKISC
QNKGVVVNSSVMVKFLFPRPDQQHSVAYTFEEDIVTTVQASYSKKKLFLSLLDFQIT
PKTVSNLTESSESIQSFLQSMITAVGIPEVTSRLEVVF TALMNSKGVSLFDIINPEIITR
DGFLLLQMDFGFPEHLLVDFLQSL
    
```

 Tel: 1-631-559-9269 1-516-512-3133

 Email: [info@creative-biomart.com](mailto:info@creative-biomart.com)  Fax: 1-631-938-8127

 45-1 Ramsey Road, Shirley, NY 11967, USA



<b>Applications</b>	Enzyme-linked Immunoabsorbent Assay Western Blot (Recombinant protein) Antibody Production Protein Array
<b>Storage</b>	Store at -80 centigrade. Aliquot to avoid repeated freezing and thawing.
<b>Storage Buffer</b>	50 mM Tris-HCl, 10 mM reduced Glutathione, pH=8.0 in the elution buffer.

## GENE INFORMATION

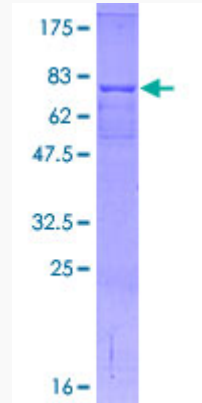
<b>Gene Name</b>	CETP cholesteryl ester transfer protein, plasma [ Homo sapiens ]
<b>Official Symbol</b>	CETP
<b>Synonyms</b>	CETP; cholesteryl ester transfer protein, plasma; cholesteryl ester transfer protein; BPI fold containing family F; BPIFF; lipid transfer protein I; HDLCQ10;
<b>Gene ID</b>	1071
<b>mRNA Refseq</b>	NM_000078
<b>Protein Refseq</b>	NP_000069
<b>MIM</b>	118470
<b>UniProt ID</b>	P11597

Tel: 1-631-559-9269 1-516-512-3133

Email: [info@creative-biomart.com](mailto:info@creative-biomart.com) Fax: 1-631-938-8127

45-1 Ramsey Road, Shirley, NY 11967, USA

**Quality Control  
Testing**



12.5% SDS-PAGE Stained with Coomassie Blue.

 Tel: 1-631-559-9269 1-516-512-3133

 Email: [info@creative-biomart.com](mailto:info@creative-biomart.com)  Fax: 1-631-938-8127

 45-1 Ramsey Road, Shirley, NY 11967, USA