

Recombinant Full Length Human CETP Protein, C-Flag-tagged

Cat. No. CETP-1233HFL Lot. No. (See product label)

SPECIFICATION

Product Overview	Recombinant Full Length Human CETP Protein, fused to Flag-tag at C-terminus, was expressed in Mammalian cells.
Species	Human
Source	Mammalian Cells
Description	The protein encoded by this gene is found in plasma, where it is involved in the transfer of cholesteryl ester from high density lipoprotein (HDL) to other lipoproteins. Defects in this gene are a cause of hyperalphalipoproteinemia 1 (HALP1). Two transcript variants encoding different isoforms have been found for this gene.
Form	25 mM Tris HCl, pH 7.3, 100 mM glycine, 10% glycerol.
Molecular Mass	53 kDa
AA Sequence	<p>MLAATVLTLLALLGNAHACSKGTSHEAGIVCRITKPALLVLNHETAKVIQTAFQRASYP DITGEKAMMLLG QVKYGLHNIQISHLSIASSQVELVEAKSIDVSIQNVSVVFKGTLKY GYTTAWWLIGIDQSIDFEIDSAIDL QINTQLTCDSGRVRTDAPDCYLSFHKLLLHLQGE REPGWIKQLFTNFISFTLKLVLKGQICKEINVISNI MADFVQTRAASILSDGDIGVDISL TGDPVITASYLESHHKGHFIYKNVSEDLPLPTFSPTLLGDSRMLYF WFSERVFHSLA KVAFQDGRMLMLSLMGDEFKAVLETWGFNTNQEIQEVVGGFPSQAQVTVHCLKMP KISC QNKGVVVNSSVMVKFLFPRPDQQHSVAYTFEEDIVTTVQASYSKKKLFLLSLLD FQITPKTVSNLTISSSE SIQSFLQSMITAVGIPEVMSRLEVFTALMNSKGVSLFDIIN PEIITRDGFLLLQMDFGFPEHLLVDFLQ</p>

 Tel: 1-631-559-9269 1-516-512-3133

 Email: info@creative-biomart.com  Fax: 1-631-938-8127

 45-1 Ramsey Road, Shirley, NY 11967, USA

SLSTRTRPLEQKLISEEDLAANDILDYKDDDDKV

Purity > 80% as determined by SDS-PAGE and Coomassie blue staining.

Stability Stable for 12 months from the date of receipt of the product under proper storage and handling conditions. Avoid repeated freeze-thaw cycles.

Storage Store at -80 centigrade.

Concentration >50 ug/mL as determined by microplate BCA method.

Preparation Recombinant protein was captured through anti-DDK affinity column followed by conventional chromatography steps.

Protein Families Druggable Genome, Secreted Protein

Full Length Full L.

GENE INFORMATION

Gene Name CETP cholesteryl ester transfer protein [Homo sapiens (human)]

Official Symbol CETP

Synonyms BPIFF; HDLCQ10

Gene ID 1071

mRNA Refseq NM_000078.3

Protein Refseq NP_000069.2

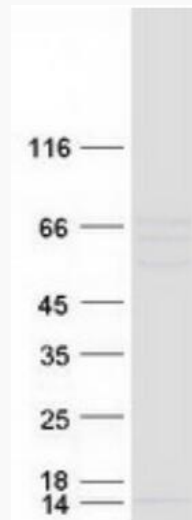
 Tel: 1-631-559-9269 1-516-512-3133

 Email: info@creative-biomart.com  Fax: 1-631-938-8127

 45-1 Ramsey Road, Shirley, NY 11967, USA

MIM 118470

UniProt ID P11597



Coomassie blue staining of purified CETP protein.

 Tel: 1-631-559-9269 1-516-512-3133

 Email: info@creative-biomart.com  Fax: 1-631-938-8127

 45-1 Ramsey Road, Shirley, NY 11967, USA