

Recombinant Human CETP protein, His-tagged

Cat. No. CETP-3234H Lot. No. (See product label)

SPECIFICATION

Product Overview	Recombinant Human CETP protein(Lys353~Gly470), fused with N-terminal His Tag, was expressed in E.coli.
Species	Human
Source	E.coli
ProteinLength	Lys353~Gly470
Form	PBS, pH7.4, containing 0.01% SKL, 1mM DTT, 5% Trehalose and Proclin300.
Molecular Mass	15kDa
Endotoxin	<1.0EU per 1g (determined by the LAL method)
Purity	> 95%
Storage	Avoid repeated freeze/thaw cycles. Store at 2-8°C for one month. Aliquot and store at -80°C for 12 months.
Reconstitution	Reconstitute in 10mM PBS (pH7.4) to a concentration of 0.1-1.0 mg/mL. Do not vortex.

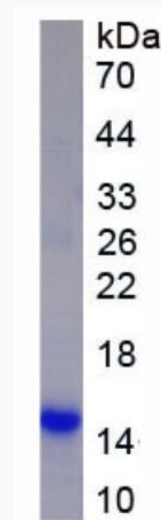
GENE INFORMATION

 Tel: 1-631-559-9269 1-516-512-3133

 Email: info@creative-biomart.com  Fax: 1-631-938-8127

 45-1 Ramsey Road, Shirley, NY 11967, USA

Gene Name	CETP cholesteryl ester transfer protein, plasma [Homo sapiens]
Official Symbol	CETP
Synonyms	CETP; cholesteryl ester transfer protein, plasma; cholesteryl ester transfer protein; BPI fold containing family F; BPIFF; lipid transfer protein I; HDLCQ10;
Gene ID	1071
mRNA Refseq	NM_000078
Protein Refseq	NP_000069
MIM	118470
UniProt ID	P11597

SDS-PAGE


 Tel: 1-631-559-9269 1-516-512-3133

 Email: info@creative-biomart.com  Fax: 1-631-938-8127

 45-1 Ramsey Road, Shirley, NY 11967, USA