

## Recombinant Human CETP protein, GST-tagged

Cat. No. CETP-5633H Lot. No. (See product label)

### SPECIFICATION

<b>Product Overview</b>	Recombinant Human CETP protein(144-493 aa), fused with N-terminal GST tag, was expressed in E.coli.
<b>Species</b>	Human
<b>Source</b>	E.coli
<b>ProteinLength</b>	144-493 aa
<b>Form</b>	The purified protein was lyophilized from sterile phosphate-buffered saline (PBS: 58 mM Na <sub>2</sub> HPO <sub>4</sub> , 17 mM NaH <sub>2</sub> PO <sub>4</sub> , 68 mM NaCl, pH 8.0). Prior to lyophilization, 5% (w/v) trehalose and 5% (w/v) mannitol were incorporated as cryoprotective excipients. The protein was eluted with a buffer containing 100 mM reduced glutathione (GSH).
<b>AASequence</b>	TQLTCDSGRVRTDAPDCYLSFHKLLLHLQGEREPGWIKQLFTNFISFTLKLVLKGGQIC KEINVISNIMADVFQTRAASILSDGDIGVDISLTGDPVITASYLESHHKGHFIYKNVSED LPLPTFSPTLLGDSRMLYFWFSERVFHSLAKVAFQDGRMLSLMGDEFKAVLETWG FNTNQEIFQEVVGGFPSQAQVTVHCLKMPKISCQNKGVVVNSSVMVKFLFPRPDQQ HSVAYTFEEDIVTTVQASYSKKKLFLLDFQITPKTVSNLTESSESISQSFLLQSMITAV GIPEVMSRLEVVFALMNSKGVSLFDIINPEIITRDGFLLLQMDFGFPEHLLVDFLQSL S
<b>Purity</b>	85%, by SDS-PAGE with Coomassie Brilliant Blue staining.

 Tel: 1-631-559-9269 1-516-512-3133

 Email: [info@creative-biomart.com](mailto:info@creative-biomart.com)  Fax: 1-631-938-8127

 45-1 Ramsey Road, Shirley, NY 11967, USA

**Storage** Store at 2-8°C for 1-2 weeks. Aliquot and store at -20°C to -80°C for up to 3 months, reconstitution with sterile water and addition of an equal volume of glycerol. Avoid repeat freeze-thaw cycles.

**Reconstitution** Dissolve the product in 200 µl sterile water to achieve a working concentration of 0.25 g/µl. If experimental compatibility allows, mix the aqueous solution with an equal volume of glycerol (1:1 ratio) after initial reconstitution.

## GENE INFORMATION

**Gene Name** CETP cholesteryl ester transfer protein, plasma [ Homo sapiens ]

**Official Symbol** CETP

**Synonyms** CETP; cholesteryl ester transfer protein, plasma; cholesteryl ester transfer protein; BPI fold containing family F; BPIFF; lipid transfer protein I; HDLCQ10;

**Gene ID** 1071

**mRNA Refseq** NM\_000078

**Protein Refseq** NP\_000069

**MIM** 118470

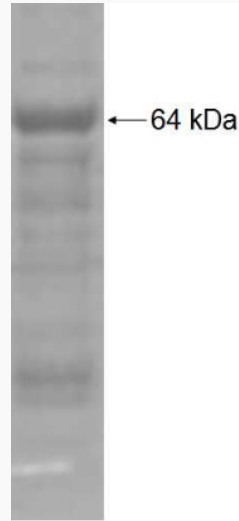
**UniProt ID** P11597

 Tel: 1-631-559-9269 1-516-512-3133

 Email: [info@creative-biomart.com](mailto:info@creative-biomart.com)  Fax: 1-631-938-8127

 45-1 Ramsey Road, Shirley, NY 11967, USA

**SDS-PAGE**



 Tel: 1-631-559-9269 1-516-512-3133

 Email: [info@creative-biomart.com](mailto:info@creative-biomart.com)  Fax: 1-631-938-8127

 45-1 Ramsey Road, Shirley, NY 11967, USA