

Recombinant Human CETP protein, MBP&His-tagged

Cat. No. CETP-7547H Lot. No. (See product label)

SPECIFICATION

Product Overview	Recombinant Human CETP protein(P11597)(18-493aa), fused with N-terminal MBP tag and C-terminal His tag, was expressed in E.coli.
Species	Human
Source	E.coli
ProteinLength	18-493a.a.
Tag	MBP&His
Form	If the delivery form is liquid, the default storage buffer is Tris/PBS-based buffer, 5%-50% glycerol. If the delivery form is lyophilized powder, the buffer before lyophilization is Tris/PBS-based buffer, 6% Trehalose, pH 8.0.
Molecular Mass	96.9 kDa
Purity	Greater than 85% as determined by SDS-PAGE.
Storage	Store at -20°C/-80°C upon receipt, aliquoting is necessary for mutiple use. Avoid repeated freeze-thaw cycles.
Reconstitution	We recommend that this vial be briefly centrifuged prior to opening to bring the contents to the bottom. Please reconstitute protein in deionized sterile water to a concentration of 0.1-1.0 mg/mL.We recommend to add 5-50% of glycerol (final

 Tel: 1-631-559-9269 1-516-512-3133

 Email: info@creative-biomart.com  Fax: 1-631-938-8127

 45-1 Ramsey Road, Shirley, NY 11967, USA

concentration) and aliquot for long-term storage at -20°C/-80°C.

AA Sequence

CSKGTSGEAGIVCRITKPALLVLNHETAKVIQTAQFRASYPDITGEKAMMLLGQVKYG
 LHNIQISHLSIASSQVELVEAKSIDVSIQNVSVVFKGTLKYGYTTAWWLGIDQSIDFEID
 SAIDLQINTQLTCDSGRVRTDAPDCYLSFHKLLLHLQGEREPGWIKQLFTNFISFTLKL
 VLKGQICKEINVISNIMADFVQTRAASILSDGDIGVDISLTGDPVITASYLESHHKGHFI
 YKNVSEDLPPTFSPTLLGDSRMLYFWFSERVFHSLAKVAFQDGRMLMSLMGDEFK
 AVLETWGFNTNQEIQEVVGGFPSQAQVTVHCLKMPKISCQNKGVVNVSSVMVKFL
 FPRPDQQHSVAYTFEEDIVTTVQASYSKKKLFLLDFQITPKTVSNLTESSESQVS
 FLQSMITAVGIPEVMSRLEVFTALMNSKGVSLFDIINPEIITRDGFLLLQMDFGFPEH
 LLVDFLQSL

GENE INFORMATION

Gene Name [CETP cholesteryl ester transfer protein, plasma \[Homo sapiens \]](#)

Official Symbol [CETP](#)

Synonyms CETP; cholesteryl ester transfer protein, plasma; cholesteryl ester transfer protein; BPI fold containing family F; BPIFF; lipid transfer protein I; HDLCQ10;

Gene ID [1071](#)

mRNA Refseq [NM_000078](#)

Protein Refseq [NP_000069](#)

MIM [118470](#)

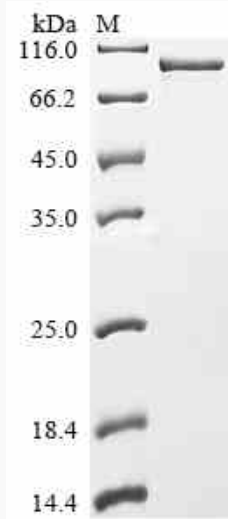
UniProt ID [P11597](#)

 Tel: 1-631-559-9269 1-516-512-3133

 Email: info@creative-biomart.com  Fax: 1-631-938-8127

 45-1 Ramsey Road, Shirley, NY 11967, USA

SDS-PAGE



 Tel: 1-631-559-9269 1-516-512-3133

 Email: info@creative-biomart.com  Fax: 1-631-938-8127

 45-1 Ramsey Road, Shirley, NY 11967, USA