

## Recombinant Rabbit CETP protein, His-tagged

Cat. No. CETP-7735R Lot. No. (See product label)

### SPECIFICATION

|                         |   |
|-------------------------|---|
| <b>Product Overview</b> | Recombinant Rabbit CETP aa. (His232~His487 (Accession # P22687)) fused with N-terminal His tag was produced in E. coli cells.   |
| <b>Species</b>          | Rabbit  |
| <b>Source</b>           | E.coli  |
| <b>ProteinLength</b>    | His232~His487   |
| <b>Form</b>             | Freeze-dried powder   |
| <b>Molecular Mass</b>   | Predicted Molecular Mass: 29.5kDa   |
| <b>Endotoxin</b>        | <1.0EU per 1g (determined by the LAL method)  |
| <b>Purity</b>           | >95%  |
| <b>Characteristic</b>   | The isoelectric point is 7.2.   |
| <b>Applications</b>     | SDS-PAGE; WB; ELISA; IP.  |
| <b>Stability</b>        | The thermal stability is described by the loss rate. The loss rate was determined by accelerated thermal degradation test, that is, incubate the protein at 37°C for 48h, and no obvious degradation and precipitation were observed. The loss rate is less than 5% within the expiration date under appropriate storage condition. |

 Tel: 1-631-559-9269 1-516-512-3133

 Email: [info@creative-biomart.com](mailto:info@creative-biomart.com)  Fax: 1-631-938-8127

 45-1 Ramsey Road, Shirley, NY 11967, USA

|                       |  |
|-----------------------|--|
| <b>Storage</b>        | Avoid repeated freeze/thaw cycles. Store at 2-8°C for one month. Aliquot and store at -80°C for 12 months. |
| <b>Storage buffer</b> | Supplied as lyophilized form in PBS, pH7.4, containing 5% sucrose, 0.01% sarcosyl.                         |
| <b>Reconstitution</b> | Reconstitute in sterile PBS, pH7.2-pH7.4.  |

## GENE INFORMATION

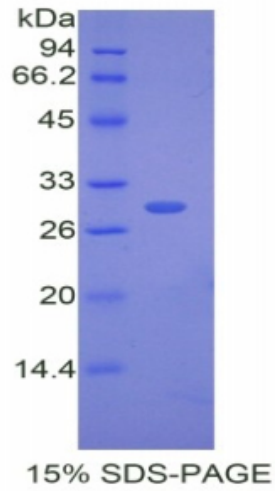
|                        |  |
|------------------------|--|
| <b>Gene Name</b>       | CETP cholesteryl ester transfer protein [ <i>Oryctolagus cuniculus</i> (rabbit) ]                        |
| <b>Official Symbol</b> | CETP   |
| <b>Synonyms</b>        | Lipid transfer protein I; cholesteryl ester transfer protein, plasma; cholesteryl ester transfer protein |
| <b>Gene ID</b>         | 100327267  |
| <b>mRNA Refseq</b>     | XM_017342235.1   |
| <b>Protein Refseq</b>  | XP_017197724.1   |

 Tel: 1-631-559-9269 1-516-512-3133

 Email: [info@creative-biomart.com](mailto:info@creative-biomart.com)  Fax: 1-631-938-8127

 45-1 Ramsey Road, Shirley, NY 11967, USA

SDS-PAGE



 Tel: 1-631-559-9269 1-516-512-3133

 Email: [info@creative-biomart.com](mailto:info@creative-biomart.com)  Fax: 1-631-938-8127

 45-1 Ramsey Road, Shirley, NY 11967, USA