

# Recombinant Full Length Human CFB Protein, C-Flag-tagged

Cat. No. CFB-834HFL Lot. No. (See product label)

## SPECIFICATION

<b>Product Overview</b>	Recombinant Full Length Human CFB Protein, fused to Flag-tag at C-terminus, was expressed in Mammalian cells.
<b>Species</b>	Human
<b>Source</b>	Mammalian Cells
<b>Description</b>	<p>This gene encodes complement factor B, a component of the alternative pathway of complement activation. Factor B circulates in the blood as a single chain polypeptide. Upon activation of the alternative pathway, it is cleaved by complement factor D yielding the noncatalytic chain Ba and the catalytic subunit Bb. The active subunit Bb is a serine protease which associates with C3b to form the alternative pathway C3 convertase. Bb is involved in the proliferation of preactivated B lymphocytes, while Ba inhibits their proliferation. This gene localizes to the major histocompatibility complex (MHC) class III region on chromosome 6. This cluster includes several genes involved in regulation of the immune reaction. Polymorphisms in this gene are associated with a reduced risk of age-related macular degeneration. The polyadenylation site of this gene is 421 bp from the 5' end of the gene for complement component 2.</p>
<b>Form</b>	25 mM Tris HCl, pH 7.3, 100 mM glycine, 10% glycerol.
<b>Molecular Mass</b>	83 kDa
<b>AA Sequence</b>	MGSNLSPQLCLMPFILGLLSGGVTTTPWSLAWPQGSCSLEGVEIKGGSFRLQEGQ ALEYVCPSPGFYPYP VQTRTCRSTGSWSTLKTQDQKTVRKAECRAIH CPRPHDFEN

 Tel: 1-631-559-9269 1-516-512-3133

 Email: [info@creative-biomart.com](mailto:info@creative-biomart.com)  Fax: 1-631-938-8127

 45-1 Ramsey Road, Shirley, NY 11967, USA

GEYWPRSPYYNVSDEISFHCYDGYTLRGS ANRTCQVNGRWSGQTAICDNGAGYC  
 SNPGIPIGTRKVGVSQYRLEDSVTYHCSRGLTLRGSQRRTCQEGGS WSGTEPSCQD  
 SFMYDTPQEVAEAFSSLTETIEGVDAEDGHGPGEQQKRKIVLDPSGSMNIYLVLDG  
 SDS IGASNFTGAKKCLVNLIEKVASYGVKPRYGLVYATYPKIWVKVSEADSSNADW  
 VTKQLNEINYEDHKLK SGTNTKKALQAVYSMMSWPDDVPPEGWNRTRHVILMTDG  
 LHNMGDPITVIDEIRDLLYIGKDRKNPRE DYLDVYVFGVGPLVNQVNINALASKKDN  
 EQHVFKVKDMENLEDVFYQMIDESQSLSLCGMVWEHRKGTDY HKQPWQAKISVIR  
 PSKGHESCMGAVVSEYFVLTAHCFTVDDKEHSIKVSVGGEKRDLEIEVVLFPNYN  
 INGKKEAGIPEFYDYDVALIKLKNLKYGQTIRPICLPCTEGTTRALRLPPTTTCQQQK  
 EELLPAQDIKA LRVSEEEKLTRKEVYIKNGDKKGGSCERDAQYAPGYDKVKDISEVV  
 TPRFLCTGGVSPYADPNTCRGDSG  
 GPLIVHKRSRFIQVGVISWGVVDVCKNQKRQKQVPAHARDFHINLFQVLPWLKEKLQ  
 DEDLGFLTRTRPLEQKLISEEDLAANDILDYKDDDDKV

**Purity** > 80% as determined by SDS-PAGE and Coomassie blue staining.

**Stability** Stable for 12 months from the date of receipt of the product under proper storage and handling conditions. Avoid repeated freeze-thaw cycles.

**Storage** Store at -80 centigrade.

**Concentration** >50 ug/mL as determined by microplate BCA method.

**Preparation** Recombinant protein was captured through anti-DDK affinity column followed by conventional chromatography steps.

**Protein Families** Druggable Genome, Protease, Secreted Protein

**Protein Pathways** Complement and coagulation cascades

 Tel: 1-631-559-9269 1-516-512-3133

 Email: [info@creative-biomart.com](mailto:info@creative-biomart.com)  Fax: 1-631-938-8127

 45-1 Ramsey Road, Shirley, NY 11967, USA

Full Length Full L.

## GENE INFORMATION

**Gene Name** CFB complement factor B [ Homo sapiens (human) ]

**Official Symbol** CFB

**Synonyms** BF; FB; BFD; GBG; CFAB; CFBD; PBF2; AHUS4; FBI12; H2-Bf; ARMD14

**Gene ID** 629

**mRNA Refseq** NM\_001710.6

**Protein Refseq** NP\_001701.2

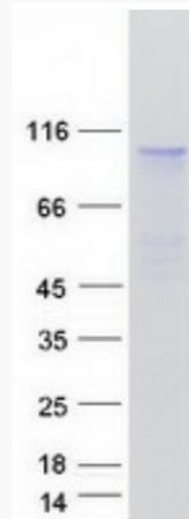
**MIM** 138470

**UniProt ID** P00751

 Tel: 1-631-559-9269 1-516-512-3133

 Email: [info@creative-biomart.com](mailto:info@creative-biomart.com)  Fax: 1-631-938-8127

 45-1 Ramsey Road, Shirley, NY 11967, USA



Coomassie blue staining of purified CFB protein.

 Tel: 1-631-559-9269 1-516-512-3133

 Email: [info@creative-biomart.com](mailto:info@creative-biomart.com)  Fax: 1-631-938-8127

 45-1 Ramsey Road, Shirley, NY 11967, USA