

## Recombinant Human CFC1 Protein, GST-Tagged

Cat. No. CFC1-1163H Lot. No. (See product label)

### SPECIFICATION

**Product Overview** Human CFC1 full-length ORF (NP\_115934.1, 1 a.a. - 223 a.a.) recombinant protein with GST-tag at N-terminal.

**Species** Human

**Source** Wheat Germ

**Description** This gene encodes a member of the epidermal growth factor (EGF)- Cripto, Frl-1, and Cryptic (CFC) family, which are involved in signalling during embryonic development. Proteins in this family share a variant EGF-like motif, a conserved cysteine-rich domain, and a C-terminal hydrophobic region. The protein encoded by this gene is necessary for patterning the left-right embryonic axis. Mutations in this gene are associated with defects in organ development, including autosomal visceral heterotaxy and congenital heart disease. Alternatively spliced transcript variants encoding multiple isoforms have been observed for this gene. [provided by RefSeq, Jul 2012]

**Molecular Mass** 51 kDa

**AA Sequence** MTWRHHVRLLFVSLALQIINLGNSYQREKHNGGREEVTKVATQKHRQSPLNWTSS  
HFGEVTGSAEGWGPEEPLPYSRAFGE GASARPRCCRNNGGTCVLG SFCVCPAHT  
GRYCEHDQRRSECGALEHGAWTLRACHLCRCIFGALHCLPLQTPDRCDPKDFLAS  
HAHGPSAGGAPSLLLLLPCALLHRLLRPDAPAHPRSLVPSVLQRRERRPCGRPGLGH  
RL

 Tel: 1-631-559-9269 1-516-512-3133

 Email: [info@creative-biomart.com](mailto:info@creative-biomart.com)  Fax: 1-631-938-8127

 45-1 Ramsey Road, Shirley, NY 11967, USA



<b>Applications</b>	Enzyme-linked Immunoabsorbent Assay Western Blot (Recombinant protein) Antibody Production Protein Array
<b>Storage</b>	Store at -80 centigrade. Aliquot to avoid repeated freezing and thawing.
<b>Storage Buffer</b>	50 mM Tris-HCl, 10 mM reduced Glutathione, pH=8.0 in the elution buffer.

## GENE INFORMATION

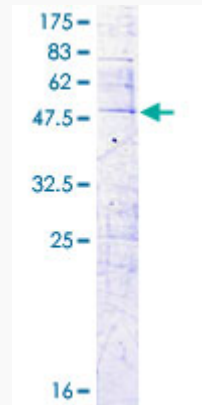
<b>Gene Name</b>	CFC1 cripto, FRL-1, cryptic family 1 [ Homo sapiens ]
<b>Official Symbol</b>	CFC1
<b>Synonyms</b>	CFC1; cripto, FRL-1, cryptic family 1; cryptic protein; CRYPTIC; HTX2; cryptic family protein 1; CFC1B; DTGA2; FLJ77897; MGC133213;
<b>Gene ID</b>	55997
<b>mRNA Refseq</b>	NM_032545
<b>Protein Refseq</b>	NP_115934
<b>MIM</b>	605194
<b>UniProt ID</b>	P0CG37

Tel: 1-631-559-9269 1-516-512-3133

Email: [info@creative-biomart.com](mailto:info@creative-biomart.com) Fax: 1-631-938-8127

45-1 Ramsey Road, Shirley, NY 11967, USA

**Quality Control  
Testing**



12.5% SDS-PAGE Stained with Coomassie Blue.

 Tel: 1-631-559-9269 1-516-512-3133

 Email: [info@creative-biomart.com](mailto:info@creative-biomart.com)  Fax: 1-631-938-8127

 45-1 Ramsey Road, Shirley, NY 11967, USA