

## Recombinant Human CFC1 Protein (Met1-Gly169), C-His tagged

Cat. No. CFC1-2162H Lot. No. (See product label)

### SPECIFICATION

<b>Product Overview</b>	Recombinant human CFC1 (Met1-Gly169) fused with C-terminal His tag was expressed in Mammalian cells.
<b>Species</b>	Human
<b>Source</b>	Mammalian Cells
<b>ProteinLength</b>	Met1-Gly169
<b>Form</b>	Lyophilized powder/frozen liquid
<b>Molecular Mass</b>	18.59 kDa
<b>Purity</b>	>90% as determined by SDS-PAGE
<b>Notes</b>	For research use only.
<b>Storage</b>	Use a manual defrost freezer and avoid repeated freeze thaw cycles. Store at 2 to 8 centigrade for one week. Store at -20 to -80 centigrade for twelve months from the date of receipt.
<b>Storage Buffer</b>	Supplied as solution form in PBS or lyophilized from PBS.
<b>Reconstitution</b>	Reconstitute in sterile water for a stock solution.

 Tel: 1-631-559-9269 1-516-512-3133

 Email: [info@creative-biomart.com](mailto:info@creative-biomart.com)  Fax: 1-631-938-8127

 45-1 Ramsey Road, Shirley, NY 11967, USA

**Shipping** They are shipped out with dry ice/blue ice unless customers require otherwise.

## GENE INFORMATION

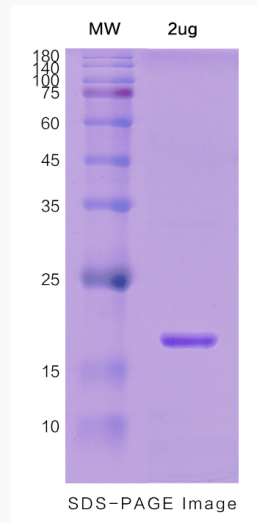
<b>Gene Name</b>	CFC1 cripto, FRL-1, cryptic family 1 [ Homo sapiens (human) ]
<b>Official Symbol</b>	CFC1
<b>Synonyms</b>	CFC1; cripto, FRL-1, cryptic family 1; cryptic protein; CRYPTIC; HTX2; cryptic family protein 1; CFC1B; DTGA2; FLJ77897; MGC133213;
<b>Gene ID</b>	55997
<b>mRNA Refseq</b>	NM_032545
<b>Protein Refseq</b>	NP_115934
<b>MIM</b>	605194
<b>UniProt ID</b>	P0CG37

 Tel: 1-631-559-9269 1-516-512-3133

 Email: [info@creative-biomart.com](mailto:info@creative-biomart.com)  Fax: 1-631-938-8127

 45-1 Ramsey Road, Shirley, NY 11967, USA

**SDS-PAGE**



 Tel: 1-631-559-9269 1-516-512-3133

 Email: [info@creative-biomart.com](mailto:info@creative-biomart.com)  Fax: 1-631-938-8127

 45-1 Ramsey Road, Shirley, NY 11967, USA