

Recombinant Rat CFD Protein, His/MYC-tagged

Cat. No. CFD-1165R **Lot. No.** (See product label)

SPECIFICATION

Product Overview	Recombinant Rat CFD Protein (26-263aa) was expressed in mammalian cells with N-terminal 10xHis-tag and C-terminal Myc-tag.
Species	Rat
Source	HEK293
ProteinLength	26-263 a.a.
Form	Tris-based buffer, 50% glycerol.
Molecular Mass	29.8 kDa
AA Sequence	<p>ILGGQEAMAHARPYMASVQVNGTHVCGGTLVDEQWVLSAAHCMDGVTKDEVVQV LLGAHSLSSPEPYKHL YDVQSVVLHPGSRPDSVEDDLMLFKLSHNASLGPHVRPLPLQREDREVKPGTLCDV AGWGVVTHAGRRPD VLQQLTVSIMDRNTCNLRTYHDGAIKNNMCAESNRRDTCRGDSGGPLVCGDAVE AVVTWGSRVCGNRRK PGVFTRVATYVPWIENVLSGNVSVNVTA</p>
Purity	Greater than 90% as determined by SDS-PAGE.
Storage	The shelf life of liquid form is 6 months at -20 centigrade/-80 centigrade. The shelf life of lyophilized form is 12 months at -20 centigrade/-80 centigrade.

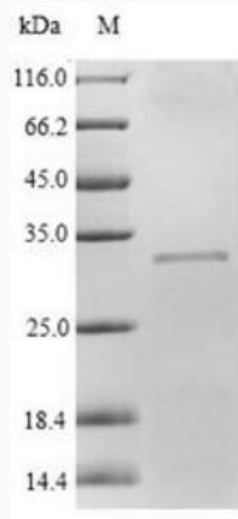
 Tel: 1-631-559-9269 1-516-512-3133

 Email: info@creative-biomart.com  Fax: 1-631-938-8127

 45-1 Ramsey Road, Shirley, NY 11967, USA

GENE INFORMATION

Gene Name	Cfd complement factor D [<i>Rattus norvegicus</i> (Norway rat)]
Official Symbol	CFD
Synonyms	Df; Adn; EVE; Cfd; complement factor D; C3 convertase activator; D component of complement (adipsin); adipsin; endogenous vascular elastase; properdin factor D
Gene ID	54249
mRNA Refseq	NM_001077642.1
Protein Refseq	NP_001071110.1
UniProt ID	P32038



 Tel: 1-631-559-9269 1-516-512-3133

 Email: info@creative-biomart.com  Fax: 1-631-938-8127

 45-1 Ramsey Road, Shirley, NY 11967, USA