

Recombinant Human CFD protein, His-tagged

Cat. No. CFD-187H Lot. No. (See product label)

SPECIFICATION

Product Overview	Recombinant Human CFD protein(P00746-1)(Ile26-Ala253), fused with C-terminal His tag, was expressed in HEK293.
Species	Human
Source	HEK293
ProteinLength	Ile26-Ala253
Tag	C-His
Form	Lyophilized from 0.22µm filtered solution in PBS (pH 7.4). Normally 5% trehalose is added as protectant before lyophilization.
Bio-activity	Immobilized Human Complement Factor D, His Tag at 1µg/ml (100µl/Well) on the plate. Dose response curve for Anti-Complement Factor D Antibody, hFc Tag with the EC50 of 18.1ng/ml determined by ELISA.
Molecular Mass	The protein has a predicted MW of 25.5 kDa. Due to glycosylation, the protein migrates to 26-27 kDa based on Tris-Bis PAGE result.
Endotoxin	Less than 1EU per µg by the LAL method.
Purity	> 95% as determined by Tris-Bis PAGE; > 95% as determined by HPLC

 Tel: 1-631-559-9269 1-516-512-3133

 Email: info@creative-biomart.com  Fax: 1-631-938-8127

 45-1 Ramsey Road, Shirley, NY 11967, USA

Storage Reconstituted protein stable at -80°C for 12 months, 4°C for 1 week. Use a manual defrost freezer and avoid repeated freeze-thaw cycles.

Reconstitution Centrifuge tubes before opening. Reconstituting to a concentration more than 100 µg/ml is recommended. Dissolve the lyophilized protein in distilled water.

GENE INFORMATION

Gene Name CFD complement factor D (adipsin) [Homo sapiens]

Official Symbol CFD

Synonyms CFD; complement factor D (adipsin); D component of complement (adipsin) , DF, PFD, properdin factor D; complement factor D; ADN; properdin factor D; C3 convertase activator; complement factor D preproprotein; D component of complement (adipsin); DF; PFD; ADIPSIN;

Gene ID 1675

mRNA Refseq NM_001928

Protein Refseq NP_001919

MIM 134350

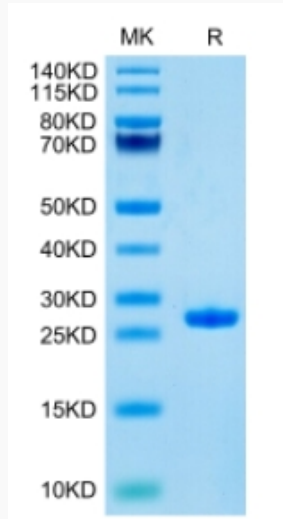
UniProt ID P00746

 Tel: 1-631-559-9269 1-516-512-3133

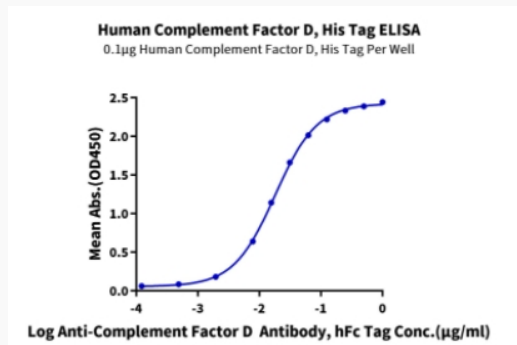
 Email: info@creative-biomart.com  Fax: 1-631-938-8127

 45-1 Ramsey Road, Shirley, NY 11967, USA

Tris-Bis PAGE



ELISA Data



 Tel: 1-631-559-9269 1-516-512-3133

 Email: info@creative-biomart.com  Fax: 1-631-938-8127

 45-1 Ramsey Road, Shirley, NY 11967, USA