

Recombinant Rat CFD Protein (26-263 aa), His-tagged

Cat. No. CFD-2178R **Lot. No.** (See product label)

SPECIFICATION

Product Overview	Recombinant Rat CFD Protein (26-263 aa) is produced by Yeast expression system. This protein is fused with a 6xHis tag at the N-terminal. Research Area: Immunology. Protein Description: Full Length of Mature Protein.
Species	Rat
Source	Yeast
ProteinLength	26-263 aa
Description	Factor D cleaves factor B when the latter is complexed with factor C3b, activating the C3bbb complex, which then becomes the C3 convertase of the alternate pathway. Its function is homologous to that of C1s in the classical pathway.
Form	Tris-based buffer,50% glycerol
Molecular Mass	27.8 kDa
AA Sequence	ILGGQEAMAHARPYMASVQVNGTHVCGGTLVDEQWVLSAAHCMDGVTKDEVVQV LLGAHSLSSPEPYKHLVDVQSVVLHPGSRPDSVEDDLMLFKLSHNASLGPHVRPLPL QREDREVKPGTLCDVAGWGVVTHAGRRPDVLQQLTVSIMDRNTCNLRTYHDGAI KNMMCAESNRRDTCRGDSGGPLVCGDAVEAVVTWGSRVCGNRRKPGVFTRVATY VPWIENVLSGNVSVNVTA
Purity	> 90% as determined by SDS-PAGE.

 Tel: 1-631-559-9269 1-516-512-3133

 Email: info@creative-biomart.com  Fax: 1-631-938-8127

 45-1 Ramsey Road, Shirley, NY 11967, USA

Notes	Repeated freezing and thawing is not recommended. Store working aliquots at 4 centigrade for up to one week.
Storage	The shelf life is related to many factors, storage state, buffer ingredients, storage temperature and the stability of the protein itself. Generally, the shelf life of liquid form is 6 months at -20 centigrade/-80 centigrade. The shelf life of lyophilized form is 12 months at -20 centigrade/-80 centigrade.
Concentration	A hardcopy of COA with reconstitution instruction is sent along with the products.

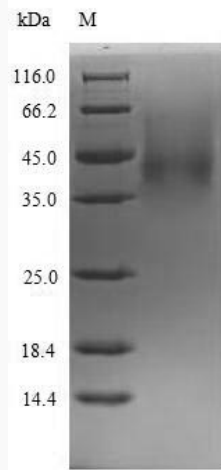
GENE INFORMATION

Gene Name	Cfd complement factor D (adipsin) [Rattus norvegicus]
Official Symbol	CFD
Synonyms	CFD; complement factor D; adipsin; properdin factor D; Df; Adn; EVE;
Gene ID	54249
mRNA Refseq	NM_001077642
Protein Refseq	NP_001071110
UniProt ID	P32038

 Tel: 1-631-559-9269 1-516-512-3133

 Email: info@creative-biomart.com  Fax: 1-631-938-8127

 45-1 Ramsey Road, Shirley, NY 11967, USA



(Tris-Glycine gel) Discontinuous SDS-PAGE (reduced) with 5% enrichment gel and 15% separation gel.

 Tel: 1-631-559-9269 1-516-512-3133

 Email: info@creative-biomart.com  Fax: 1-631-938-8127

 45-1 Ramsey Road, Shirley, NY 11967, USA