

Recombinant Human CFD protein, hFc-tagged

Cat. No. CFD-3810H **Lot. No.** (See product label)

SPECIFICATION

Product Overview	Recombinant Human CFD protein(P00746-1)(Ile26-Ala253), fused with C-terminal hFc tag, was expressed in HEK293.
Species	Human
Source	HEK293
ProteinLength	Ile26-Ala253
Tag	C-hFc
Form	Lyophilized from 0.22µm filtered solution in PBS (pH 7.4). Normally 5% trehalose is added as protectant before lyophilization.
Bio-activity	Immobilized Human Complement Factor D, hFc Tag at 2µg/ml (100µl/Well) on the plate. Dose response curve for Biotinylated Anti-Complement Factor D Antibody, hFc Tag with the EC50 of 53.7ng/ml determined by ELISA.
Molecular Mass	The protein has a predicted MW of 51.2 kDa. Due to glycosylation, the protein migrates to 52-60 kDa based on Tris-Bis PAGE result.
Endotoxin	Less than 1EU per µg by the LAL method.
Purity	> 95% as determined by Tris-Bis PAGE

 Tel: 1-631-559-9269 1-516-512-3133

 Email: info@creative-biomart.com  Fax: 1-631-938-8127

 45-1 Ramsey Road, Shirley, NY 11967, USA

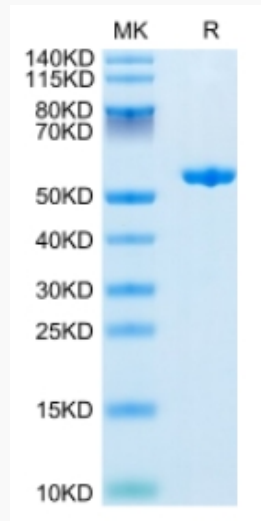
Storage	Reconstituted protein stable at -80°C for 12 months, 4°C for 1 week. Use a manual defrost freezer and avoid repeated freeze-thaw cycles.
Reconstitution	Centrifuge tubes before opening. Reconstituting to a concentration more than 100 µg/ml is recommended. Dissolve the lyophilized protein in distilled water.
GENE INFORMATION	
Gene Name	CFD complement factor D (adipsin) [Homo sapiens]
Official Symbol	CFD
Synonyms	CFD; complement factor D (adipsin); D component of complement (adipsin) , DF, PFD, properdin factor D; complement factor D; ADN; properdin factor D; C3 convertase activator; complement factor D preproprotein; D component of complement (adipsin); DF; PFD; ADIPSIN;
Gene ID	1675
mRNA Refseq	NM_001928
Protein Refseq	NP_001919
MIM	134350
UniProt ID	P00746

 Tel: 1-631-559-9269 1-516-512-3133

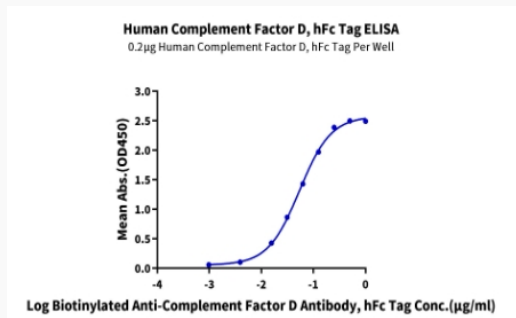
 Email: info@creative-biomart.com  Fax: 1-631-938-8127

 45-1 Ramsey Road, Shirley, NY 11967, USA

Tris-Bis PAGE



ELISA Data



 Tel: 1-631-559-9269 1-516-512-3133

 Email: info@creative-biomart.com  Fax: 1-631-938-8127

 45-1 Ramsey Road, Shirley, NY 11967, USA