

Recombinant Human CFDP1 Protein (1-299 aa), GST-tagged

Cat. No. CFDP1-2128H Lot. No. (See product label)

SPECIFICATION

| | |
|-------------------------|---|
| Product Overview | Recombinant Human CFDP1 Protein (1-299 aa) is produced by E. coli expression system. This protein is fused with a GST tag at the N-terminal. Research Area: Stem Cells. Protein Description: Full Length. |
| Species | Human |
| Source | E.coli |
| ProteinLength | 1-299 aa |
| Description | May play a role during embryogenesis. |
| Form | Tris-based buffer,50% glycerol |
| Molecular Mass | 60.6 kDa |
| AA Sequence | MEEFDSEDFSTSEEDDYVPSGGEYSEDDVNELVKEDEVGEEQTQKTQGKKRKA QSIPARKRRQGGLSLEEEEEEDANSESEGSSEEEEDDAAEQEKIGISEDARKKKED ELWASFLNDVGPVSKVPPSTQVKKGEETEETSSSKLLVKAEELEKPKETEKVKITKV FDFAGEEVRVTKEVDATSKEAKSFFKQNEKEKPQANVPSALPSLPAGSGLKRSSGM SSLLGKIGAKKQKMSTLEKSKLDWESFKEEEGIGEELAIHNRGKEGYIERKAFLDRVD HRQFEIERDLRLSKMKP |
| Purity | > 90% as determined by SDS-PAGE. |

 Tel: 1-631-559-9269 1-516-512-3133

 Email: info@creative-biomart.com  Fax: 1-631-938-8127

 45-1 Ramsey Road, Shirley, NY 11967, USA

| | |
|----------------------|---|
| Notes | Repeated freezing and thawing is not recommended. Store working aliquots at 4 centigrade for up to one week. |
| Storage | The shelf life is related to many factors, storage state, buffer ingredients, storage temperature and the stability of the protein itself. Generally, the shelf life of liquid form is 6 months at -20 centigrade/-80 centigrade. The shelf life of lyophilized form is 12 months at -20 centigrade/-80 centigrade. |
| Concentration | A hardcopy of COA will be sent along with the products. Please refer to it for detailed information. |

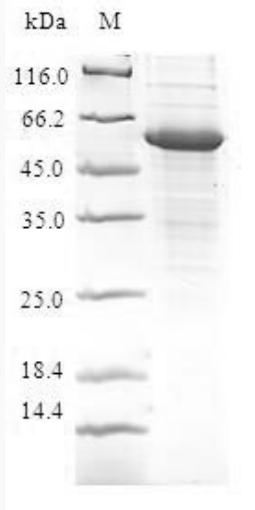
GENE INFORMATION

| | |
|------------------------|---|
| Gene Name | CFDP1 craniofacial development protein 1 [Homo sapiens] |
| Official Symbol | CFDP1 |
| Synonyms | CFDP1; BCNT; Bucentaur; CENP 29; CP27; p97; SWC5; Yeti; CENP-29; BUCENTAUR; |
| Gene ID | 10428 |
| mRNA Refseq | NM_006324 |
| Protein Refseq | NP_006315 |
| MIM | 608108 |
| UniProt ID | Q9UEE9 |

 Tel: 1-631-559-9269 1-516-512-3133

 Email: info@creative-biomart.com  Fax: 1-631-938-8127

 45-1 Ramsey Road, Shirley, NY 11967, USA



(Tris-Glycine gel) Discontinuous SDS-PAGE (reduced) with 5% enrichment gel and 15% separation gel.

 Tel: 1-631-559-9269 1-516-512-3133

 Email: info@creative-biomart.com  Fax: 1-631-938-8127

 45-1 Ramsey Road, Shirley, NY 11967, USA