

Recombinant Human CFH Protein (Glu19-Pro346), N-His tagged

Cat. No. CFH-1048H Lot. No. (See product label)

SPECIFICATION

Product Overview	Recombinant Human CFH (Glu19-Pro346) fused with the N-His tag was expressed in E. coli.
Species	Human
Source	E.coli
ProteinLength	Glu19-Pro346
Form	Lyophilized powder/frozen liquid
Molecular Mass	39.52 kDa
Purity	>90% as determined by SDS-PAGE.
Notes	For research use only.
Storage	Use a manual defrost freezer and avoid repeated freeze thaw cycles. Store at 2 to 8 centigrade for one week. Store at -20 to -80 centigrade for twelve months from the date of receipt.
Storage Buffer	0.01M PBS, pH 7.4, 0.02% NLS
Reconstitution	Reconstitute in sterile water for a stock solution.

 Tel: 1-631-559-9269 1-516-512-3133

 Email: info@creative-biomart.com  Fax: 1-631-938-8127

 45-1 Ramsey Road, Shirley, NY 11967, USA

Shipping They are shipped out with dry ice/blue ice unless customers require otherwise.

GENE INFORMATION

Gene Name [CFH complement factor H \[Homo sapiens \(human\) \]](#)

Official Symbol [CFH](#)

Synonyms CFH; complement factor H; H factor 1 (complement), HF, HF1, HF2; age related maculopathy susceptibility 1; ARMS1; beta 1H; FHL1; H factor 2 (complement); HUS; beta-1H; factor H; factor H-like 1; beta-1-H-globulin; H factor 1 (complement); adrenomedullin binding protein; complement factor H, isoform b; age-related maculopathy susceptibility 1; FH; HF; HF1; HF2; AHUS1; AMBP1; ARMD4; CFHL3; MGC88246;

Gene ID [3075](#)

mRNA Refseq [NM_000186](#)

Protein Refseq [NP_000177](#)

MIM [134370](#)

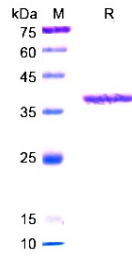
UniProt ID [P08603](#)

 Tel: 1-631-559-9269 1-516-512-3133

 Email: info@creative-biomart.com  Fax: 1-631-938-8127

 45-1 Ramsey Road, Shirley, NY 11967, USA

SDS-PAGE



 Tel: 1-631-559-9269 1-516-512-3133

 Email: info@creative-biomart.com  Fax: 1-631-938-8127

 45-1 Ramsey Road, Shirley, NY 11967, USA