

## Recombinant Human CFH Protein (Glu19-Leu449), C-His tagged

Cat. No. CFH-1180H    Lot. No. (See product label)

### SPECIFICATION

<b>Product Overview</b>	Recombinant human CFH (Glu19-Leu449) fused with the C-terminal His tag was expressed in Mammalian cells.
<b>Species</b>	Human
<b>Source</b>	Mammalian Cells
<b>ProteinLength</b>	Glu19-Leu449
<b>Form</b>	Lyophilized powder/frozen liquid
<b>Molecular Mass</b>	47.41 kDa
<b>Purity</b>	>90% as determined by SDS-PAGE.
<b>Notes</b>	For research use only.
<b>Storage</b>	Use a manual defrost freezer and avoid repeated freeze thaw cycles. Store at 2 to 8 centigrade for one week. Store at -20 to -80 centigrade for twelve months from the date of receipt.
<b>Storage Buffer</b>	Supplied as solution form in PBS or lyophilized from PBS.
<b>Reconstitution</b>	Reconstitute in sterile water for a stock solution.

 Tel: 1-631-559-9269    1-516-512-3133

 Email: [info@creative-biomart.com](mailto:info@creative-biomart.com)     Fax: 1-631-938-8127

 45-1 Ramsey Road, Shirley, NY 11967, USA

**Shipping** They are shipped out with dry ice/blue ice unless customers require otherwise.

## GENE INFORMATION

**Gene Name** [CFH complement factor H \[ Homo sapiens \(human\) \]](#)

**Official Symbol** [CFH](#)

**Synonyms** CFH; complement factor H; H factor 1 (complement), HF, HF1, HF2; age related maculopathy susceptibility 1; ARMS1; beta 1H; FHL1; H factor 2 (complement); HUS; beta-1H; factor H; factor H-like 1; beta-1-H-globulin; H factor 1 (complement); adrenomedullin binding protein; complement factor H, isoform b; age-related maculopathy susceptibility 1; FH; HF; HF1; HF2; AHUS1; AMBP1; ARMD4; CFHL3; MGC88246;

**Gene ID** [3075](#)

**mRNA Refseq** [NM\\_000186](#)

**Protein Refseq** [NP\\_000177](#)

**MIM** [134370](#)

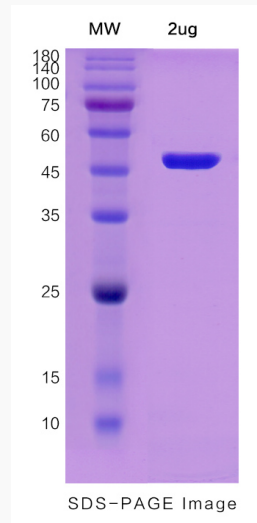
**UniProt ID** [P08603](#)

 Tel: 1-631-559-9269 1-516-512-3133

 Email: [info@creative-biomart.com](mailto:info@creative-biomart.com)  Fax: 1-631-938-8127

 45-1 Ramsey Road, Shirley, NY 11967, USA

**SDS-PAGE**



 Tel: 1-631-559-9269 1-516-512-3133

 Email: [info@creative-biomart.com](mailto:info@creative-biomart.com)  Fax: 1-631-938-8127

 45-1 Ramsey Road, Shirley, NY 11967, USA