

Active Recombinant Human CFH protein, His-tagged

Cat. No. CFH-3183H Lot. No. (See product label)

SPECIFICATION

Product Overview	Active Recombinant Human CFH protein(P08603-1)(Ser860-Arg1231) is expressed from HEK293 with His tag at the C-Terminus.
Species	Human
Source	HEK293
ProteinLength	860-1231 aa
Form	Lyophilized from 0.22µm filtered solution in PBS (pH 7.4).
Bio-activity	Immobilized Human Factor H, His Tag at 0.5µg/ml (100µl/well) on the plate. Dose response curve for Anti-Factor H Antibody, hFc Tag with the EC50 of 10.6ng/ml determined by ELISA.
Molecular Mass	The protein has a predicted MW of 42.8 kDa. Due to glycosylation, the protein migrates to 60-68 kDa based on Bis-Tris PAGE result.
Endotoxin	Less than 1 EU per µg by the LAL method.
Purity	> 95% as determined by Bis-Tris PAGE > 95% as determined by HPLC
Storage	-20 to -80°C for 12 months as supplied from date of receipt. -80°C for 3 months after reconstitution. Recommend to aliquot the protein into smaller quantities for optimal storage. Please minimize freeze-thaw cycles.

 Tel: 1-631-559-9269 1-516-512-3133

 Email: info@creative-biomart.com  Fax: 1-631-938-8127

 45-1 Ramsey Road, Shirley, NY 11967, USA

Reconstitution Dissolve the lyophilized protein in distilled water.

GENE INFORMATION

Gene Name CFH complement factor H [Homo sapiens]

Official Symbol CFH

Synonyms CFH; complement factor H; H factor 1 (complement) , HF, HF1, HF2; age related maculopathy susceptibility 1; ARMS1; beta 1H; FHL1; H factor 2 (complement); HUS; beta-1H; factor H; factor H-like 1; beta-1-H-globulin; H factor 1 (complement); adrenomedullin binding protein; complement factor H, isoform b; age-related maculopathy susceptibility 1; FH; HF; HF1; HF2; AHUS1; AMBP1; ARMD4; CFHL3; MGC88246;

Gene ID 3075

mRNA Refseq NM_000186

Protein Refseq NP_000177

MIM 134370

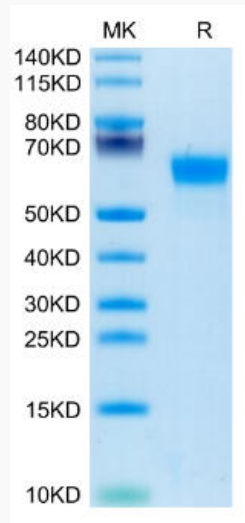
UniProt ID P08603

 Tel: 1-631-559-9269 1-516-512-3133

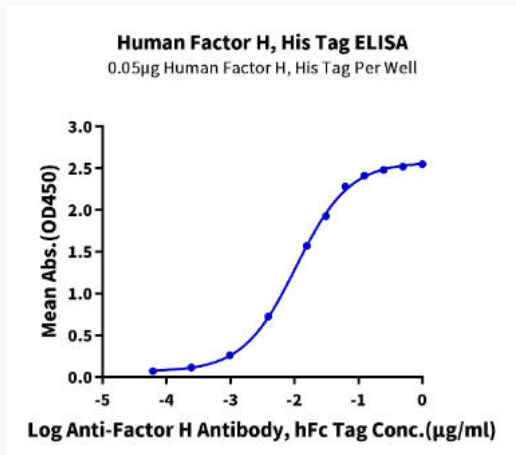
 Email: info@creative-biomart.com  Fax: 1-631-938-8127

 45-1 Ramsey Road, Shirley, NY 11967, USA

Bis-Tris PAGE



ELISA Data



 Tel: 1-631-559-9269 1-516-512-3133

 Email: info@creative-biomart.com  Fax: 1-631-938-8127

 45-1 Ramsey Road, Shirley, NY 11967, USA