

Recombinant Human CFH protein, rFc-tagged

Cat. No. CFH-3771H Lot. No. (See product label)

SPECIFICATION

Product Overview	Recombinant Human CFH protein(P08603-1)(Ser860-Arg1231), fused with C-terminal rFc tag, was expressed in HEK293.
Species	Human
Source	HEK293
Form	Lyophilized from 0.22 µm filtered solution in PBS, pH 7.4. Normally 5% trehalose and 5% mannitol are added as protectants before lyophilization.
Molecular Mass	68.0 kDa
Endotoxin	<0.1 EU/µg protein, LAL method
Purity	>90 %, SDS-PAGE
Storage	It is recommended that the protein be aliquoted for optimal storage. Avoid repeated freeze-thaw cycles. Until expiry date, -20°C to -80°C as lyophilized proteins. 3 months, -20°C to -80°C under sterile conditions after reconstitution.
Reconstitution	Briefly centrifuge the tube before opening. Reconstitute at 0.1-0.5 mg/mL in sterile water.

GENE INFORMATION

 Tel: 1-631-559-9269 1-516-512-3133

 Email: info@creative-biomart.com  Fax: 1-631-938-8127

 45-1 Ramsey Road, Shirley, NY 11967, USA

Gene Name	CFH complement factor H [Homo sapiens]
Official Symbol	CFH
Synonyms	CFH; complement factor H; H factor 1 (complement) , HF, HF1, HF2; age related maculopathy susceptibility 1; ARMS1; beta 1H; FHL1; H factor 2 (complement); HUS; beta-1H; factor H; factor H-like 1; beta-1-H-globulin; H factor 1 (complement); adrenomedullin binding protein; complement factor H, isoform b; age-related maculopathy susceptibility 1; FH; HF; HF1; HF2; AHUS1; AMBP1; ARMD4; CFHL3; MGC88246;
Gene ID	3075
mRNA Refseq	NM_000186
Protein Refseq	NP_000177
MIM	134370
UniProt ID	P08603

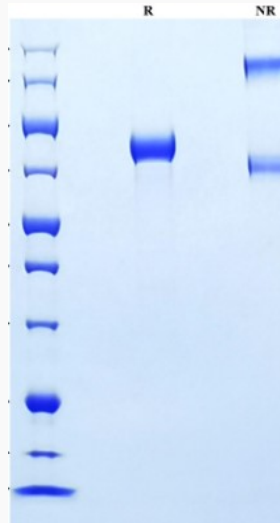
 Tel: 1-631-559-9269 1-516-512-3133

 Email: info@creative-biomart.com  Fax: 1-631-938-8127

 45-1 Ramsey Road, Shirley, NY 11967, USA



SDS-PAGE



Tel: 1-631-559-9269 1-516-512-3133

Email: info@creative-biomart.com Fax: 1-631-938-8127

45-1 Ramsey Road, Shirley, NY 11967, USA