

Recombinant Human CFHR1, His-tagged

Cat. No. CFHR1-268H Lot. No. (See product label)

SPECIFICATION

Product Overview	Recombinant Human CFHR1 protein(Glu19-Arg330), fused with C-terminal His tag, was expressed in HEK293.
Species	Human
Source	HEK293
ProteinLength	Glu19-Arg330
Tag	C-His
Form	Liquid in sterile PBS, pH7.4.
Molecular Mass	The recombinant human CFHR1 consists of 323 amino acids and predicts a molecular mass of 37.2 KDa. It migrates as an approximately 45 KDa band in SDS-PAGE under reducing conditions.
Endotoxin	<1.0EU per 1µg (determined by the LAL method).
Purity	> 95 % as determined by SDS-PAGE.
Storage	Store it under sterile conditions at -80°C. It is recommended that the protein be aliquoted for optimal storage. Avoid repeated freeze-thaw cycles.
Concentration	1.0mg/ml.

 Tel: 1-631-559-9269 1-516-512-3133

 Email: info@creative-biomart.com  Fax: 1-631-938-8127

 45-1 Ramsey Road, Shirley, NY 11967, USA

Reconstitution Centrifuge the vial at 4°C before opening to recover the entire contents.

GENE INFORMATION

Gene Name [CFHR1 complement factor H-related 1 \[Homo sapiens \]](#)

Official Symbol [CFHR1](#)

Synonyms CFHR1; complement factor H-related 1; CFHL1, CFHL1P, CFHR1P, complement factor H related 1 pseudogene , H factor (complement) like 1 , H factor (complement) like 2 , HFL1, HFL2; complement factor H-related protein 1; CFHL; FHR1; H36 1; H36 2; H36; FHR-1; H-factor-like 1; h factor-like protein 1; H factor (complement)-like 1; H factor (complement)-like 2; complement factor H-related 1 pseudogene; HFL1; HFL2; CFHL1; H36-1; H36-2; CFHL1P; CFHR1P; MGC104329;

Gene ID [3078](#)

mRNA Refseq [NM_002113](#)

Protein Refseq [NP_002104](#)

MIM [134371](#)

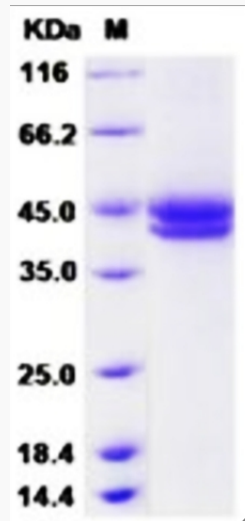
UniProt ID [Q03591](#)

 Tel: 1-631-559-9269 1-516-512-3133

 Email: info@creative-biomart.com  Fax: 1-631-938-8127

 45-1 Ramsey Road, Shirley, NY 11967, USA

SDS-PAGE



 Tel: 1-631-559-9269 1-516-512-3133

 Email: info@creative-biomart.com  Fax: 1-631-938-8127

 45-1 Ramsey Road, Shirley, NY 11967, USA