

Recombinant Human CFHR1 protein(132-221aa), His-GST&Myc-tagged

Cat. No. CFHR1-2819H Lot. No. (See product label)

SPECIFICATION

Product Overview	Recombinant Human CFHR1 protein(Q03591)(132-221aa), fused with N-terminal His and GST and C-terminal Myc tag, was expressed in E. coli.
Species	Human
Source	E.coli
ProteinLength	132-221aa
Form	If the delivery form is liquid, the default storage buffer is Tris/PBS-based buffer, 5%-50% glycerol. If the delivery form is lyophilized powder, the buffer before lyophilization is Tris/PBS-based buffer, 6% Trehalose, pH 8.0.
Molecular Mass	45.2 kDa
Purity	Greater than 85% as determined by SDS-PAGE.
Storage	Store at -20°C/-80°C upon receipt, aliquoting is necessary for multiple use. Avoid repeated freeze-thaw cycles.
Reconstitution	We recommend that this vial be briefly centrifuged prior to opening to bring the contents to the bottom. Please reconstitute protein in deionized sterile water to a concentration of 0.1-1.0 mg/mL. We recommend to add 5-50% of glycerol (final concentration) and aliquot for long-term storage at -20°C/-80°C.

 Tel: 1-631-559-9269 1-516-512-3133

 Email: info@creative-biomart.com  Fax: 1-631-938-8127

 45-1 Ramsey Road, Shirley, NY 11967, USA

AA Sequence RGWSTPPKCRSTDTSCVNPPTVQNAHILSRQMSKYPSEGERVRYECSRSPYEMFGDE
 EVMCLNGNWTEPPQCKDSTGKCGPPPIDNGDITS

GENE INFORMATION

Gene Name [CFHR1 complement factor H-related 1 \[Homo sapiens \]](#)

Official Symbol [CFHR1](#)

Synonyms

CFHR1; complement factor H-related 1; CFHL1, CFHL1P, CFHR1P, complement factor H related 1 pseudogene , H factor (complement) like 1 , H factor (complement) like 2 , HFL1, HFL2; complement factor H-related protein 1; CFHL; FHR1; H36 1; H36 2; H36; FHR-1; H-factor-like 1; h factor-like protein 1; H factor (complement)-like 1; H factor (complement)-like 2; complement factor H-related 1 pseudogene; HFL1; HFL2; CFHL1; H36-1; H36-2; CFHL1P; CFHR1P; MGC104329;

Gene ID [3078](#)

mRNA Refseq [NM_002113](#)

Protein Refseq [NP_002104](#)

MIM [134371](#)

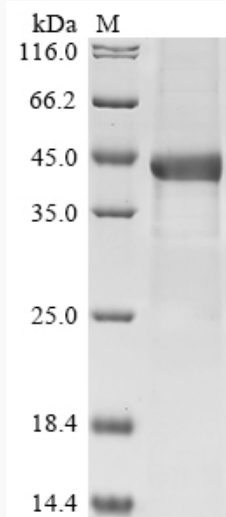
UniProt ID [Q03591](#)

 Tel: 1-631-559-9269 1-516-512-3133

 Email: info@creative-biomart.com  Fax: 1-631-938-8127

 45-1 Ramsey Road, Shirley, NY 11967, USA

SDS-PAGE



 Tel: 1-631-559-9269 1-516-512-3133

 Email: info@creative-biomart.com  Fax: 1-631-938-8127

 45-1 Ramsey Road, Shirley, NY 11967, USA