

Recombinant Human CFHR1 Protein, His-tagged

Cat. No. CFHR1-764H **Lot. No.** (See product label)

SPECIFICATION

Product Overview	Recombinant Human CFHR1 Protein (Thr205-Lys329) with His tag was expressed in E. coli.
Species	Human
Source	E.coli
ProteinLength	Thr205-Lys329
Description	This gene encodes a secreted protein belonging to the complement factor H protein family. It binds to Pseudomonas aeruginosa elongation factor Tuf together with plasminogen, which is proteolytically activated. It is proposed that Tuf acts as a virulence factor by acquiring host proteins to the pathogen surface, controlling complement, and facilitating tissue invasion. Mutations in this gene are associated with an increased risk of atypical hemolytic-uremic syndrome.
Form	Freeze-dried powder
Molecular Mass	Predicted Molecular Mass: 17.9 kDa; Accurate Molecular Mass: 18 kDa
Purity	> 95%
Applications	Positive Control; Immunogen; SDS-PAGE; WB.
Stability	The thermal stability is described by the loss rate. The loss rate was determined by

 Tel: 1-631-559-9269 1-516-512-3133

 Email: info@creative-biomart.com  Fax: 1-631-938-8127

 45-1 Ramsey Road, Shirley, NY 11967, USA

accelerated thermal degradation test, that is, incubate the protein at 37 centigrade for 48h, and no obvious degradation and precipitation were observed. The loss rate is less than 5% within the expiration date under appropriate storage condition.

Storage

Avoid repeated freeze/thaw cycles. Store at 2-8 centigrade for one month. Aliquot and store at -80 centigrade for 12 months.

Storage Buffer

20mM Tris, 150mM NaCl, pH8.0, containing 1mM EDTA, 1mM DTT, 0.01% SKL, 5% Trehalose and Proclin300.

Reconstitution

Reconstitute in ddH₂O to a concentration of 0.1-1.0 mg/mL. Do not vortex.

GENE INFORMATION

Gene Name

CFHR1 complement factor H-related 1 [Homo sapiens (human)]

Official Symbol

CFHR1

Synonyms

CFHR1; complement factor H-related 1; CFHL1, CFHL1P, CFHR1P, complement factor H related 1 pseudogene, H factor (complement) like 1, H factor (complement) like 2, HFL1, HFL2; complement factor H-related protein 1; CFHL; FHR1; H36 1; H36 2; H36; FHR-1; H-factor-like 1; h factor-like protein 1; H factor (complement)-like 1; H factor (complement)-like 2; complement factor H-related 1 pseudogene; HFL1; HFL2; CFHL1; H36-1; H36-2; CFHL1P; CFHR1P; MGC104329;

Gene ID

3078

mRNA Refseq

NM_002113

Protein Refseq

NP_002104

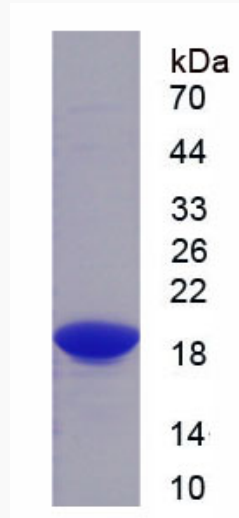
 Tel: 1-631-559-9269 1-516-512-3133

 Email: info@creative-biomart.com  Fax: 1-631-938-8127

 45-1 Ramsey Road, Shirley, NY 11967, USA

MIM 134371

UniProt ID Q03591



 Tel: 1-631-559-9269 1-516-512-3133

 Email: info@creative-biomart.com  Fax: 1-631-938-8127

 45-1 Ramsey Road, Shirley, NY 11967, USA