

# Recombinant Full Length Human CFHR2 Protein, C-Flag-tagged

**Cat. No.** CFHR2-2167HFL    **Lot. No.** (See product label)

## SPECIFICATION

### Product Overview

Recombinant Full Length Human CFHR2 Protein, fused to Flag-tag at C-terminus, was expressed in Mammalian cells.

### Species

Human

### Source

Mammalian Cells

### Description

This gene belongs to a family of complement factor H-related genes (CFHR), which are clustered together with complement factor H gene on chromosome 1, and are involved in regulation of complement. Mutations in CFHR genes have been associated with dense deposit disease and atypical haemolytic-uraemic syndrome. Alternatively spliced transcript variants have been found for this gene.

### Form

25 mM Tris HCl, pH 7.3, 100 mM glycine, 10% glycerol.

### Molecular Mass

30.5 kDa

### AA Sequence

MWLLVSVILISRISSVGGGEAMFCDFPKINHGILYDEEKYKPFSSQVPTGEVVFYYSCEYN  
 FVSPSKSFWTRI TCAEEGWSPTPKCLRLCFFPFVENGHSESSGQTHLEGDTVQIIC  
 NTGYRLQNNENNISCVERGWSTPPKC RSTISAEKCGPPPPIDNGDITSFLLSVYAPG  
 SSVEYQCQONLYQLEGNNQITCRNGQWSEPPKCLDPCVIS QEIMEKYNIKLKWTNQQ  
 KLYSRTGDIVEFVCKSGYHPTKSHSFRAMCQNGKLVYPSCEEK TRTRPLEQKLISE  
 EDLAANDILDYKDDDDKV

 Tel: 1-631-559-9269    1-516-512-3133

 Email: [info@creative-biomart.com](mailto:info@creative-biomart.com)     Fax: 1-631-938-8127

 45-1 Ramsey Road, Shirley, NY 11967, USA

<b>Purity</b>	> 80% as determined by SDS-PAGE and Coomassie blue staining.
<b>Stability</b>	Stable for 12 months from the date of receipt of the product under proper storage and handling conditions. Avoid repeated freeze-thaw cycles.
<b>Storage</b>	Store at -80 centigrade.
<b>Concentration</b>	>50 ug/mL as determined by microplate BCA method.
<b>Preparation</b>	Recombinant protein was captured through anti-DDK affinity column followed by conventional chromatography steps.
<b>Protein Families</b>	Secreted Protein
<b>Full Length</b>	Full L.

## GENE INFORMATION

<b>Gene Name</b>	CFHR2 complement factor H related 2 [ Homo sapiens (human) ]
<b>Official Symbol</b>	CFHR2
<b>Synonyms</b>	FHR2; HFL3; CFHL2
<b>Gene ID</b>	3080
<b>mRNA Refseq</b>	NM_005666.4
<b>Protein Refseq</b>	NP_005657.1
<b>MIM</b>	600889

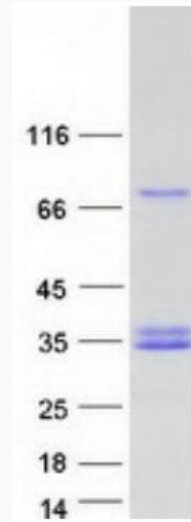
 Tel: 1-631-559-9269 1-516-512-3133

 Email: [info@creative-biomart.com](mailto:info@creative-biomart.com)  Fax: 1-631-938-8127

 45-1 Ramsey Road, Shirley, NY 11967, USA

UniProt ID

P36980



Coomassie blue staining of purified CFHR2 protein.

 Tel: 1-631-559-9269 1-516-512-3133

 Email: [info@creative-biomart.com](mailto:info@creative-biomart.com)  Fax: 1-631-938-8127

 45-1 Ramsey Road, Shirley, NY 11967, USA