

Recombinant Human CFHR2 Protein, Myc/DDK-tagged, C13 and N15-labeled

Cat. No. CFHR2-4630H Lot. No. (See product label)

SPECIFICATION

Product Overview

CFHR2 MS Standard C13 and N15-labeled recombinant protein (NP_005657) with a C-terminal MYC/DDK tag, was expressed in HEK293 cells.

Species

Human

Source

HEK293

Description

This gene belongs to a family of complement factor H-related genes (CFHR), which are clustered together with complement factor H gene on chromosome 1, and are involved in regulation of complement. Mutations in CFHR genes have been associated with dense deposit disease and atypical haemolytic-uraemic syndrome. Alternatively spliced transcript variants have been found for this gene.

Molecular Mass

30.7 kDa

AA Sequence

MWLLVSVILISRISSVGGGEAMFCDFPKINHGILYDEEKYKPFSSQVPTGEVFFYSCEYN
 FVSPSKSFWTRITCAEEGWSPTPKCLRLCFFPFVENGHSESSGQTHLEGDTVQIICN
 TGYRLQNNENNISCVERGWSTPPKCRSTISAEKCGPPPIDNGDITSFLLSVYAPGS
 SVEYQCQNLYQLEGNNQITCRNGQWSEPPKCLDPCVISQEIMEKYNIKLKWNTNQQK
 LYSRTGDIVEFVCKSGYHPTKSHSFRAMCQNGKLVYPSCEEKTRTRPLEQKLISEED
 LAANDILDYKDDDDKV

Purity

> 80% as determined by SDS-PAGE and Coomassie blue staining

 Tel: 1-631-559-9269 1-516-512-3133

 Email: info@creative-biomart.com  Fax: 1-631-938-8127

 45-1 Ramsey Road, Shirley, NY 11967, USA

Stability	Stable for 3 months from receipt of products under proper storage and handling conditions.
Storage	Store at -80 centigrade. Avoid repeated freeze-thaw cycles.
Concentration	50 µg/mL as determined by BCA
Storage Buffer	100 mM glycine, 25 mM Tris-HCl, pH 7.3.

GENE INFORMATION

Gene Name	CFHR2 complement factor H-related 2 [Homo sapiens (human)]
Official Symbol	CFHR2
Synonyms	CFHR2; complement factor H-related 2; CFHL2, H factor (complement) like 3, HFL3; complement factor H-related protein 2; FHR2; FHR-2; DDESK59; h factor-like 3; factor H-related gene 2; h factor-like protein 2; H factor (complement)-like 3; HFL3; CFHL2;
Gene ID	3080
mRNA Refseq	NM_005666
Protein Refseq	NP_005657
MIM	600889
UniProt ID	P36980

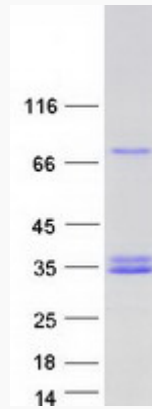
 Tel: 1-631-559-9269 1-516-512-3133

 Email: info@creative-biomart.com  Fax: 1-631-938-8127

 45-1 Ramsey Road, Shirley, NY 11967, USA



SDS-PAGE



Tel: 1-631-559-9269 1-516-512-3133

Email: info@creative-biomart.com Fax: 1-631-938-8127

45-1 Ramsey Road, Shirley, NY 11967, USA