

Active Recombinant Human CFHR4 Protein, His-tagged

Cat. No. CFHR4-83H Lot. No. (See product label)

SPECIFICATION

Product Overview	Recombinant human Complement Factor H-related 4/CFHR4 protein (Gln19-Glu331), with a C-terminal 10-His tag, expressed in <i>Spodoptera frugiperda</i> , Sf 21 (baculovirus).
Species	Human
Source	Insect Cells
ProteinLength	19-331
Description	This gene is a member of the complement factor H (CFH) gene family, and encodes one of the 5 CFH-related (CFHR) proteins. These 5 genes are closely linked to the CFH gene on chromosome 1q31-q32. The CFHRs are secreted plasma proteins synthesized primarily by the hepatocytes, and composed of highly-related short consensus repeats (SCRs). This protein enhances the cofactor activity of CFH, and is involved in complement regulation. It can associate with lipoproteins and may play a role in lipid metabolism. Alternatively spliced transcript variants encoding different isoforms (varying in the number of SCRs) have been described for this gene.
Bio-activity	Measured by its binding ability in a functional ELISA. When Recombinant Mouse Complement Component C3d is immobilized at 2 µg/mL (100 µL/well), Recombinant Human Complement Factor H-related 4/CFHR4 binds with an ED50 of 1-6 ng/mL.
Molecular Mass	37 kDa
Endotoxin	< 0.10

 Tel: 1-631-559-9269 1-516-512-3133

 Email: info@creative-biomart.com  Fax: 1-631-938-8127

 45-1 Ramsey Road, Shirley, NY 11967, USA

	EU/μg of the protein by the LAL method.
Purity	> 95%, by SDS-PAGE visualized with Silver Staining and quantitative densitometry by Coomassie® Blue Staining.
Applications	Bioactivity
Storage	Use a manual defrost freezer and avoid repeated freeze-thaw cycles. 12 months from date of receipt, -20 to -70 centigrade as supplied. 1 month, 2 to 8 centigrade under sterile conditions after reconstitution. 3 months, ≤ -20 centigrade under sterile conditions after reconstitution.
Storage Buffer	Lyophilized from a 0.2 μm filtered solution in Tris and NaCl with Trehalose.
Reconstitution	Reconstitute at 500 μg/mL in water.
Shipping	The product is shipped at ambient temperature.

GENE INFORMATION

Gene Name	CFHR4 complement factor H related 4 [Homo sapiens (human)]
Official Symbol	CFHR4
Synonyms	CFHR4; complement factor H related 4; FHR4; CFHL4; FHR-4; complement factor H-related protein 4
Gene ID	10877
mRNA Refseq	NM_006684

 Tel: 1-631-559-9269 1-516-512-3133

 Email: info@creative-biomart.com  Fax: 1-631-938-8127

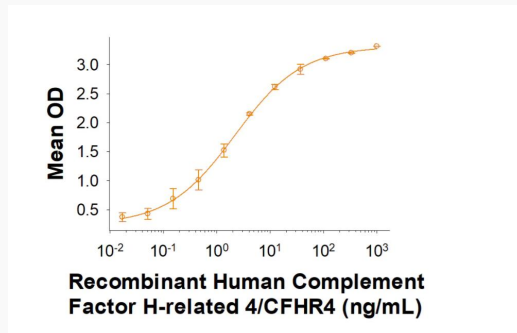
 45-1 Ramsey Road, Shirley, NY 11967, USA

Protein Refseq NP_006675

MIM 605337

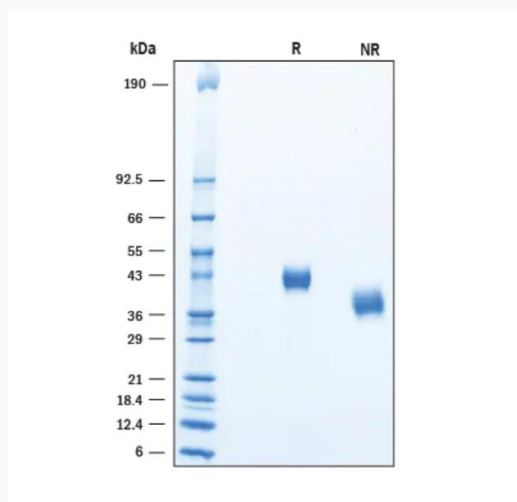
UniProt ID Q92496

**Recombinant Human
Complement Factor
H-related 4/CFHR4
Binding Activity**



When Recombinant Mouse Complement Component C3d is immobilized at 2 $\mu\text{g/mL}$, 100 $\mu\text{L/well}$, Recombinant Human Complement Factor H-related 4/CFHR4 binds with an ED50 of 1-6 ng/mL.

**Recombinant Human
Complement Factor
H-related 4/CFHR4
SDS-PAGE**




Tel: 1-631-559-9269 1-516-512-3133

Email: info@creative-biomart.com Fax: 1-631-938-8127

45-1 Ramsey Road, Shirley, NY 11967, USA



2 µg/lane of Recombinant Human Complement Factor H-related 4 was resolved with SDS-PAGE under reducing (R) and non-reducing (NR) conditions and visualized by Coomassie® Blue staining, showing bands at ~42 kDa and ~40 kDa, respectively.

 Tel: 1-631-559-9269 1-516-512-3133

 Email: info@creative-biomart.com  Fax: 1-631-938-8127

 45-1 Ramsey Road, Shirley, NY 11967, USA