

Recombinant Human CFHR5 Protein, Myc/DDK-tagged, C13 and N15-labeled

Cat. No. CFHR5-4234H **Lot. No.** (See product label)

SPECIFICATION

Product Overview	CFHR5 MS Standard C13 and N15-labeled recombinant protein (NP_110414) with a C-terminal MYC/DDK tag, was expressed in HEK293 cells.
Species	Human
Source	HEK293
Description	<p>This gene is a member of a small complement factor H (CFH) gene cluster on chromosome 1. Each member of this gene family contains multiple short consensus repeats (SCRs) typical of regulators of complement activation. The protein encoded by this gene has nine SCRs with the first two repeats having heparin binding properties, a region within repeats 5-7 having heparin binding and C reactive protein binding properties, and the C-terminal repeats being similar to a complement component 3 b (C3b) binding domain. This protein co-localizes with C3, binds C3b in a dose-dependent manner, and is recruited to tissues damaged by C-reactive protein. Allelic variations in this gene have been associated, but not causally linked, with two different forms of kidney disease: membranoproliferative glomerulonephritis type II (MPGNII) and hemolytic uraemic syndrome (HUS).</p>
Molecular Mass	62.5 kDa
AA Sequence	<p>MLLLFSVILISWVSTVGGEGTLCDFPKIHHGFLYDEEDYNPFSQVPTGEVFYYSCEYN FVSPSKSFWTRITCTEEGWSPTPKCLRMCSFPFVKNGHSESSGLIHLEGDTVQIICN</p>

 Tel: 1-631-559-9269 1-516-512-3133

 Email: info@creative-biomart.com  Fax: 1-631-938-8127

 45-1 Ramsey Road, Shirley, NY 11967, USA



TGYSLQNNEKNISCVERGWSTPPICSFTKGECHVPILEANVDAQPKKESYKVGDLK
 FSCRKNLIRVGSQCYQFGWSPNFPTCKGQVRSCGPPPQLSNGEVKEIRKEEY
 GHNEVVEYDCNPNFIINGPKKIQCVDGEWTTLPTCVEQVKTCGYIPELEYGYVQPSV
 PPYQHGVSVENVCRNEYAMIGNNMITCINGIWTELPMCVATHQLKRCKIAGVNIKTLL
 KLSGKEFNHNSRIRYRCSDIFRYRHVCINGKWNPEVDCTEKREQFCPPPPQIPNAQ
 NMTTTVNYQDGEKVAVLCKENYLLPEAKEIVCKDGRWQSLPRCVESTAYCGPPPSI
 NNGDTTSFPLSVYPPGSTVTYRCQSFYKLQGSVTVTCRNKQWSEPPRCLDPCVVS
 EENMNKNNIQLKWRNDGKLYAKTGDAVEFQCKFPHKAMISSPPFRAICQEGKFEYPI
 CETRTRPLEQKLISEEDLAANDILDYKDDDDKV

Purity	> 80% as determined by SDS-PAGE and Coomassie blue staining
Stability	Stable for 3 months from receipt of products under proper storage and handling conditions.
Storage	Store at -80 centigrade. Avoid repeated freeze-thaw cycles.
Concentration	50 µg/mL as determined by BCA
Storage Buffer	100 mM glycine, 25 mM Tris-HCl, pH 7.3.

GENE INFORMATION

Gene Name	CFHR5 complement factor H related 5 [Homo sapiens (human)]
Official Symbol	CFHR5
Synonyms	CFHR5; complement factor H related 5; FHR5; CFHL5; FHR-5; CFHR5D; complement factor H-related protein 5; factor H-related protein 5
Gene ID	81494

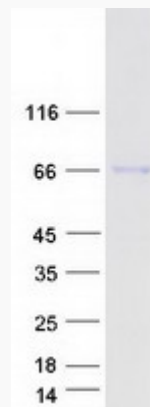
mRNA Refseq [NM_030787](#)

Protein Refseq [NP_110414](#)

MIM [608593](#)

UniProt ID [Q9BXR6](#)

SDS-PAGE



 Tel: 1-631-559-9269 1-516-512-3133

 Email: info@creative-biomart.com  Fax: 1-631-938-8127

 45-1 Ramsey Road, Shirley, NY 11967, USA