

## Recombinant Human CFHR5 Protein, GST-tagged

Cat. No. CFHR5-5191H Lot. No. (See product label)

### SPECIFICATION

|                         |  |
|-------------------------|--|
| <b>Product Overview</b> | Human CFHR5 full-length ORF ( NP_110414.1, 1 a.a. - 569 a.a.) recombinant protein with GST-tag at N-terminal.  |
| <b>Species</b>          | Human  |
| <b>Source</b>           | Wheat Germ   |
| <b>Description</b>      | <p>This gene is a member of a small complement factor H (CFH) gene cluster on chromosome 1. Each member of this gene family contains multiple short consensus repeats (SCRs) typical of regulators of complement activation. The protein encoded by this gene has nine SCRs with the first two repeats having heparin binding properties, a region within repeats 5-7 having heparin binding and C reactive protein binding properties, and the C-terminal repeats being similar to a complement component 3 b (C3b) binding domain. This protein co-localizes with C3, binds C3b in a dose-dependent manner, and is recruited to tissues damaged by C-reactive protein. Allelic variations in this gene have been associated, but not causally linked, with two different forms of kidney disease: membranoproliferative glomerulonephritis type II (MPGNII) and hemolytic uraemic syndrome (HUS). [provided by RefSeq, Jan 2010]</p> |
| <b>Molecular Mass</b>   | 90.8 kDa   |
| <b>AA Sequence</b>      | <p>MLLLFSVILISWVSTVGGEGTLCDFPKIHHGFLYDEEDYNPFSQVPTGEVFFYSCEYN<br/>           FVSPSKSFWTRITCTEEGWSPTPKCLRMCSFFPVKNGHSESSGLIHLEGDTVQIICN<br/>           TGYSLQNNEKNISCVERGWSTPPICSFTKGGECHVPILEANVDAQPKKESYKVGDVLK</p>   |

 Tel: 1-631-559-9269 1-516-512-3133

 Email: [info@creative-biomart.com](mailto:info@creative-biomart.com)  Fax: 1-631-938-8127

 45-1 Ramsey Road, Shirley, NY 11967, USA

FSCRKNLIRVGSDSVQCYQFGWSPNFPTCKGQVRSCGPPPQLSNGEVKEIRKEEY  
 GHNEVVEYDCNPNFIINGPKKIQCVDGEWTTLPTCVEQVKTCGYIPELEYGYVQPSV  
 PPYQHGVSVVEVNCRNEYAMIGNNMITCINGIWTELPVCVATHQLKRCKIAGVNIKTLL  
 KLSGKEFNHNSRIRYRCSDFIRYRHSVCINGKWNPEVDCTEKREQFCPPPPQIPNAQ  
 NMTTTVNYQDGEKVAVLCKENYLLPEAKEIVCKDGRWQSLPRCVESTAYCGPPPSI  
 NNGDTTSFPLSVYPPGSTVTYRCQSFYKLQGSVTVTCRNKQWSEPPRCLDPCVVS  
 EENMNKNNIQLKWRNDGKLYAKTGDAVEFQCKFPHKAMISSPPFRAICQEGKFEYPI  
 CE

**Applications**

Enzyme-linked Immunoabsorbent Assay  
 Western Blot (Recombinant protein)  
 Antibody Production  
 Protein Array

**Notes**

Best use within three months from the date of receipt of this protein.

**Storage**

Store at -80 centigrade. Aliquot to avoid repeated freezing and thawing.

**Storage Buffer**

50 mM Tris-HCl, 10 mM reduced Glutathione, pH=8.0 in the elution buffer.

## GENE INFORMATION

**Gene Name**

CFHR5 complement factor H related 5 [ Homo sapiens (human) ]

**Official Symbol**

CFHR5

**Synonyms**


CFHR5; complement factor H related 5; FHR5; CFHL5; FHR-5; CFHR5D;  
 complement factor H-related protein 5; factor H-related protein 5

**Gene ID**

81494

 Tel: 1-631-559-9269 1-516-512-3133

 Email: [info@creative-biomart.com](mailto:info@creative-biomart.com)  Fax: 1-631-938-8127

 45-1 Ramsey Road, Shirley, NY 11967, USA

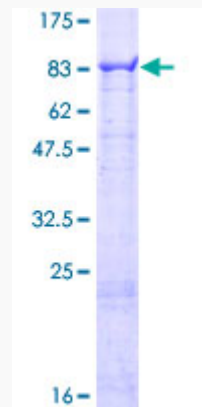
mRNA Refseq [NM\\_030787](#)

Protein Refseq [NP\\_110414](#)


MIM [608593](#)

UniProt ID [Q9BXR6](#)


**Quality Control  
Testing**



12.5% SDS-PAGE Stained with Coomassie Blue.

 Tel: 1-631-559-9269 1-516-512-3133

 Email: [info@creative-biomart.com](mailto:info@creative-biomart.com)  Fax: 1-631-938-8127

 45-1 Ramsey Road, Shirley, NY 11967, USA