

Recombinant Full Length Human CFI Protein, C-Flag-tagged

Cat. No. CFI-1531HFL **Lot. No.** (See product label)

SPECIFICATION

Product Overview	Recombinant Full Length Human CFI Protein, fused to Flag-tag at C-terminus, was expressed in Mammalian cells.
Species	Human
Source	Mammalian Cells
Description	This gene encodes a serine proteinase that is essential for regulating the complement cascade. The encoded preproprotein is cleaved to produce both heavy and light chains, which are linked by disulfide bonds to form a heterodimeric glycoprotein. This heterodimer can cleave and inactivate the complement components C4b and C3b, and it prevents the assembly of the C3 and C5 convertase enzymes. Defects in this gene cause complement factor I deficiency, an autosomal recessive disease associated with a susceptibility to pyogenic infections. Mutations in this gene have been associated with a predisposition to atypical hemolytic uremic syndrome, a disease characterized by acute renal failure, microangiopathic hemolytic anemia and thrombocytopenia. Primary glomerulonephritis with immune deposits and age-related macular degeneration are other conditions associated with mutations of this gene.
Form	25 mM Tris HCl, pH 7.3, 100 mM glycine, 10% glycerol.
Molecular Mass	63.4 kDa
AA Sequence	MKLLHVLLFLCFHLRFCKVTYTSQEDLVEKKCLAKKYTHLSCDKVFCQPWQRCIEG TCVCKLPYQCPKN GTAVCATNRRSFPTYCQQKSLECLHPGKFLNNGTCTAEGKF

 Tel: 1-631-559-9269 1-516-512-3133

 Email: info@creative-biomart.com  Fax: 1-631-938-8127

 45-1 Ramsey Road, Shirley, NY 11967, USA

SVSLKHGNTDSEGIVEVKLVDQDKTMFI CKSSWSMREANVACL D L G F Q Q G A D T Q R
 R F K L S D L S I N S T E C L H V H C R G L E T S L A E C T F T K R R T M G Y Q D F A D V V C Y T Q K A D S P M
 D D F F Q C V N G K Y I S Q M K A C D G I N D C G D Q S D E L C C K A C Q G K G F H C K S G V C I P S Q Y Q C
 N G E V D C I T G E D E V G C A G F A S V A Q E E T E I L T A D M D A E R R R I K S L L P K L S C G V K N R M H I
 R R K R I V G G K R A Q L G D L P W Q V A I K D A S G I T C G G I Y I G G C W I L T A A H C L R A S K T H R Y Q I
 W T T V V D W I H P D L K R I V I E Y V D R I I F H E N Y N A G T Y Q N D I A L I E M K K D G N K K D C E L P R S I P
 A C V P W S P Y L F Q P N D T C I V S G W G R E K D N E R V F S L Q W G E V K L I S N C S K F Y G N R F Y E K
 E M E C A G T Y D G S I D A C K G D S G G P L V C M D A N N V T Y V W G V V S W G E N C G K P E F P G V Y T
 K V A N Y F D W I S Y H V G R P F I S Q Y N V T R T R P L E Q K L I S E E D L A A N D I L D Y K D D D D K V

Purity	> 80% as determined by SDS-PAGE and Coomassie blue staining.
Stability	Stable for 12 months from the date of receipt of the product under proper storage and handling conditions. Avoid repeated freeze-thaw cycles.
Storage	Store at -80 centigrade.
Concentration	>50 ug/mL as determined by microplate BCA method.
Preparation	Recombinant protein was captured through anti-DDK affinity column followed by conventional chromatography steps.
Protein Families	Druggable Genome, Protease, Secreted Protein
Protein Pathways	Complement and coagulation cascades
Full Length	Full L.

GENE INFORMATION

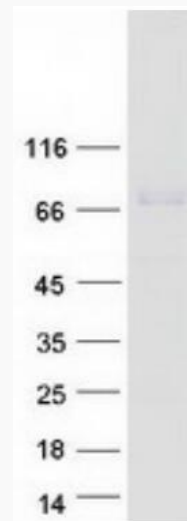
Gene Name CFI complement factor I [*Homo sapiens* (human)]

 Tel: 1-631-559-9269 1-516-512-3133

 Email: info@creative-biomart.com  Fax: 1-631-938-8127

 45-1 Ramsey Road, Shirley, NY 11967, USA

Official Symbol	CFI
Synonyms	FI; IF; KAF; AHUS3; ARMD13; C3BINA; C3b-INA
Gene ID	3426
mRNA Refseq	NM_000204.5
Protein Refseq	NP_000195.3
MIM	217030
UniProt ID	P05156



Coomassie blue staining of purified CFI protein.

 Tel: 1-631-559-9269 1-516-512-3133

 Email: info@creative-biomart.com  Fax: 1-631-938-8127

 45-1 Ramsey Road, Shirley, NY 11967, USA