

## Recombinant Human CFI protein, His-tagged

Cat. No. CFI-1560H Lot. No. (See product label)

### SPECIFICATION

<b>Product Overview</b>	Recombinant Human CFI protein(P05156)(Lys19-Val583), fused with C-terminal His tag, was expressed in HEK293.
<b>Species</b>	Human
<b>Source</b>	C-His
<b>ProteinLength</b>	Lys19-Val583
<b>Tag</b>	C-His
<b>Form</b>	Supplied as 0.22µm filtered solution in 20mM Tris, 150mM NaCl (pH 8.0).
<b>Bio-activity</b>	
<b>Molecular Mass</b>	The protein has a predicted MW of 64.58 kDa. Due to enzyme lysis and glycosylation, the protein migrates to 75-95 kDa based on Tris-Bis PAGE result.
<b>Endotoxin</b>	Less than 1EU per µg by the LAL method.
<b>Purity</b>	> 95% as determined by Tris-Bis PAGE; > 95% as determined by HPLC.
<b>Storage</b>	Valid for 12 months from date of receipt when stored at -80°C.;Recommend to aliquot the protein into smaller quantities for optimal storage. Please do not repeated freeze-thaw cycles.

 Tel: 1-631-559-9269 1-516-512-3133

 Email: [info@creative-biomart.com](mailto:info@creative-biomart.com)  Fax: 1-631-938-8127

 45-1 Ramsey Road, Shirley, NY 11967, USA

**Reconstitution** It is recommended that sterile water be added to the vial to prepare a stock solution of 0.2 ug/ul. Centrifuge the vial at 4°C before opening to recover the entire contents.

## GENE INFORMATION

**Gene Name** CFI complement factor I [ Homo sapiens ]

**Official Symbol** CFI

**Synonyms** CFI; complement factor I; I factor (complement) , IF; C3b INA; C3b inactivator; FI; KAF; Konglutinogen activating factor; C3b-inactivator; C3B/C4B inactivator; complement component I; light chain of factor I; Konglutinogen-activating factor; complement factor I heavy chain; complement control protein factor I; IF; AHUS3; C3BINA; C3b-INA;

**Gene ID** 3426

**mRNA Refseq** NM\_000204

**Protein Refseq** NP\_000195

**MIM** 217030

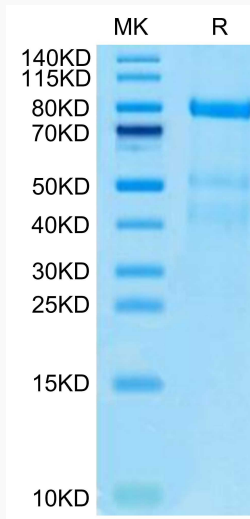
**UniProt ID** P05156

 Tel: 1-631-559-9269 1-516-512-3133

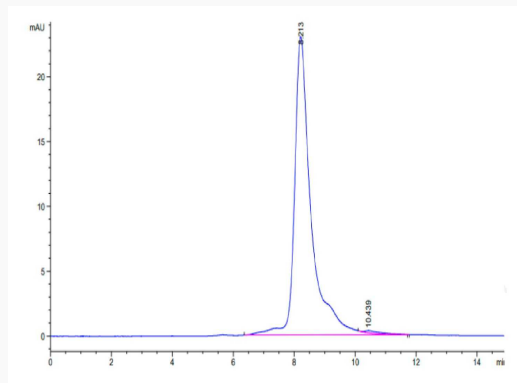
 Email: [info@creative-biomart.com](mailto:info@creative-biomart.com)  Fax: 1-631-938-8127

 45-1 Ramsey Road, Shirley, NY 11967, USA

**Tris-Bis PAGE**



**SEC-HPLC**



 Tel: 1-631-559-9269 1-516-512-3133

 Email: [info@creative-biomart.com](mailto:info@creative-biomart.com)  Fax: 1-631-938-8127

 45-1 Ramsey Road, Shirley, NY 11967, USA