

Recombinant Human CFI protein(239-316aa), His-GST&Myc-tagged

Cat. No. CFI-2741H Lot. No. (See product label)

SPECIFICATION

Product Overview	Recombinant Human CFI protein(P05156)(239-316aa), fused with N-terminal His and GST and C-terminal Myc tag, was expressed in E. coli.
Species	Human
Source	E.coli
ProteinLength	239-316aa
Form	If the delivery form is liquid, the default storage buffer is Tris/PBS-based buffer, 5%-50% glycerol. If the delivery form is lyophilized powder, the buffer before lyophilization is Tris/PBS-based buffer, 6% Trehalose, pH 8.0.
Molecular Mass	43.4 kDa
Purity	Greater than 85% as determined by SDS-PAGE.
Storage	Store at -20°C/-80°C upon receipt, aliquoting is necessary for multiple use. Avoid repeated freeze-thaw cycles.
Reconstitution	We recommend that this vial be briefly centrifuged prior to opening to bring the contents to the bottom. Please reconstitute protein in deionized sterile water to a concentration of 0.1-1.0 mg/mL. We recommend to add 5-50% of glycerol (final concentration) and aliquot for long-term storage at -20°C/-80°C.

 Tel: 1-631-559-9269 1-516-512-3133

 Email: info@creative-biomart.com  Fax: 1-631-938-8127

 45-1 Ramsey Road, Shirley, NY 11967, USA

AA Sequence KACDGINDCGDQSDELCKACQGKGFHCKSGVCIPSQYQCNGEVDCITGEDEVGC
AGFASVTQEETEILTADMDAERR

GENE INFORMATION

Gene Name CFI complement factor I [Homo sapiens]

Official Symbol CFI

Synonyms CFI; complement factor I; I factor (complement) , IF; C3b INA; C3b inactivator; FI; KAF; Konglutinogen activating factor; C3b-inactivator; C3B/C4B inactivator; complement component I; light chain of factor I; Konglutinogen-activating factor; complement factor I heavy chain; complement control protein factor I; IF; AHUS3; C3BINA; C3b-INA;

Gene ID 3426

mRNA Refseq NM_000204

Protein Refseq NP_000195

MIM 217030

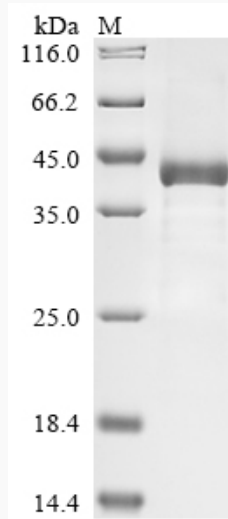
UniProt ID P05156

 Tel: 1-631-559-9269 1-516-512-3133

 Email: info@creative-biomart.com  Fax: 1-631-938-8127

 45-1 Ramsey Road, Shirley, NY 11967, USA

SDS-PAGE



 Tel: 1-631-559-9269 1-516-512-3133

 Email: info@creative-biomart.com  Fax: 1-631-938-8127

 45-1 Ramsey Road, Shirley, NY 11967, USA