

Recombinant Human CFL1 Protein, GST-Tagged

Cat. No. CFL1-1172H Lot. No. (See product label)

SPECIFICATION

| | |
|-------------------------|---|
| Product Overview | Human CFL1 full-length ORF (AAH11005, 1 a.a. - 166 a.a.) recombinant protein with GST-tag at N-terminal. |
| Species | Human |
| Source | Wheat Germ |
| Description | The protein encoded by this gene can polymerize and depolymerize F-actin and G-actin in a pH-dependent manner. Increased phosphorylation of this protein by LIM kinase aids in Rho-induced reorganization of the actin cytoskeleton. Cofilin is a widely distributed intracellular actin-modulating protein that binds and depolymerizes filamentous F-actin and inhibits the polymerization of monomeric G-actin in a pH-dependent manner. It is involved in the translocation of actin-cofilin complex from cytoplasm to nucleus.[supplied by OMIM, Apr 2004] |
| Molecular Mass | 44 kDa |
| AA Sequence | MASGVAVSDGVIVFNDMKVVRKSSTPEEVKKRKKAVLFLCLSEDKKNILEEGKEILVGDVGQTVDDPYATFAKMLPKDCRYALYDATYETKESKKEDLVFIFWAPESAPLKSKMIYASSKDAIKKLTGIKHELQANCYEGVKDRCTLAEKLGGSAVISLEGKPL |
| Applications | Enzyme-linked Immunoabsorbent Assay Western Blot (Recombinant protein) Antibody Production Protein Array |

 Tel: 1-631-559-9269 1-516-512-3133

 Email: info@creative-biomart.com  Fax: 1-631-938-8127

 45-1 Ramsey Road, Shirley, NY 11967, USA

Storage Store at -80 centigrade. Aliquot to avoid repeated freezing and thawing.

Storage Buffer 50 mM Tris-HCl, 10 mM reduced Glutathione, pH=8.0 in the elution buffer.

GENE INFORMATION

Gene Name CFL1 cofilin 1 (non-muscle) [Homo sapiens]

Official Symbol CFL1

Synonyms CFL1; cofilin 1 (non-muscle); CFL; cofilin-1; p18; 18 kDa phosphoprotein; cofilin, non-muscle isoform;

Gene ID 1072

mRNA Refseq NM_005507

Protein Refseq NP_005498

MIM 601442

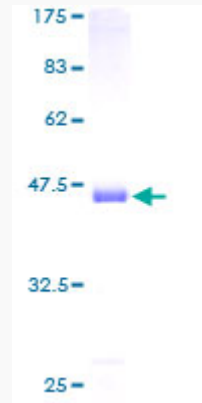
UniProt ID P23528

 Tel: 1-631-559-9269 1-516-512-3133

 Email: info@creative-biomart.com  Fax: 1-631-938-8127

 45-1 Ramsey Road, Shirley, NY 11967, USA

**Quality Control
Testing**



12.5% SDS-PAGE Stained with Coomassie Blue.

 Tel: 1-631-559-9269 1-516-512-3133

 Email: info@creative-biomart.com  Fax: 1-631-938-8127

 45-1 Ramsey Road, Shirley, NY 11967, USA