

Recombinant Full Length Human CFL1 Protein, C-Flag-tagged

Cat. No. CFL1-1692HFL **Lot. No.** (See product label)

SPECIFICATION

Product Overview	Recombinant Full Length Human CFL1 Protein, fused to Flag-tag at C-terminus, was expressed in Mammalian cells.
Species	Human
Source	Mammalian Cells
Description	The protein encoded by this gene can polymerize and depolymerize F-actin and G-actin in a pH-dependent manner. Increased phosphorylation of this protein by LIM kinase aids in Rho-induced reorganization of the actin cytoskeleton. Cofilin is a widely distributed intracellular actin-modulating protein that binds and depolymerizes filamentous F-actin and inhibits the polymerization of monomeric G-actin in a pH-dependent manner. It is involved in the translocation of actin-cofilin complex from cytoplasm to nucleus.
Form	25 mM Tris HCl, pH 7.3, 100 mM glycine, 10% glycerol.
Molecular Mass	18.3 kDa
AA Sequence	MASGVAVSDGVIKVFNDMKVVRKSSTPEEVKKRKKAVLFCLSEDKKNILEEGKEILVG DVGQTVDDPYAT FVKMLPKDKCRYALYDATYETKESKKEDLVFIFWAPESAPLKSK MIYASSKDAIKKLTGIKHELQANCY EEVKDRCTLAEKLGGSAVISLEGKPLTRTRPLEQKLISEEDLAANDILDYKDDDDKV
Purity	> 80% as determined by SDS-PAGE and Coomassie blue staining.

 Tel: 1-631-559-9269 1-516-512-3133

 Email: info@creative-biomart.com  Fax: 1-631-938-8127

 45-1 Ramsey Road, Shirley, NY 11967, USA

Stability	Stable for 12 months from the date of receipt of the product under proper storage and handling conditions. Avoid repeated freeze-thaw cycles.
Storage	Store at -80 centigrade.
Concentration	>50 ug/mL as determined by microplate BCA method.
Preparation	Recombinant protein was captured through anti-DDK affinity column followed by conventional chromatography steps.
Protein Families	Druggable Genome
Protein Pathways	Axon guidance, Fc gamma R-mediated phagocytosis, Regulation of actin cytoskeleton
Full Length	Full L.

GENE INFORMATION

Gene Name	CFL1 cofilin 1 [Homo sapiens (human)]
Official Symbol	CFL1
Synonyms	CFL; cofilin; HEL-S-15
Gene ID	1072
mRNA Refseq	NM_005507.3
Protein Refseq	NP_005498.1

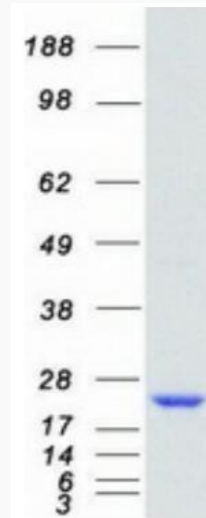
 Tel: 1-631-559-9269 1-516-512-3133

 Email: info@creative-biomart.com  Fax: 1-631-938-8127

 45-1 Ramsey Road, Shirley, NY 11967, USA

MIM 601442

UniProt ID P23528



Coomassie blue staining of purified CFL1 protein.

 Tel: 1-631-559-9269 1-516-512-3133

 Email: info@creative-biomart.com  Fax: 1-631-938-8127

 45-1 Ramsey Road, Shirley, NY 11967, USA