

Recombinant Human Cofilin 1 (Non-muscle), GST-tagged

Cat. No. CFL1-2374H Lot. No. (See product label)

SPECIFICATION

Product Overview	Recombinant human Cofilin1 (2-end) with N-terminal GST tag, was expressed in a <i>E.coli</i> expression system. MW=44 kDa.
Species	Human
Source	E.coli
ProteinLength	2-end a.a.
Description	Cofilin is a family of actin-binding proteins which disassembles actin filaments. It is a widely distributed intracellular actin-modulating protein that binds and depolymerizes filamentous F-actin and inhibits the polymerization of monomeric G-actin in a pH-dependent manner. It is involved in the translocation of actin-cofilin complex from cytoplasm to nucleus.
Formulated In	25 mM Tris-HCl, pH 8.0, 100 mM NaCl, 0.05% Tween-20, 30% glycerol, and 3 mM DTT.
Application	Kinase substrate for the kinase assay; western blot.
Stability	>6 months at -80°C.
Pathways	Axon guidance; Regulation of actin cytoskeleton; Hemostasis

GENE INFORMATION

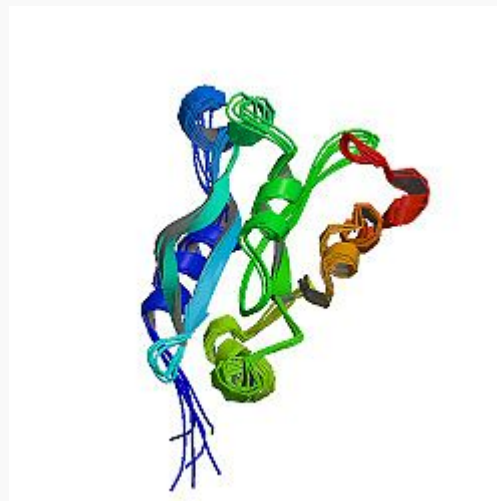
 Tel: 1-631-559-9269 1-516-512-3133

 Email: info@creative-biomart.com  Fax: 1-631-938-8127

 45-1 Ramsey Road, Shirley, NY 11967, USA

Gene Name	CFL1 cofilin 1 (non-muscle) [Homo sapiens]
Synonyms	CFL-1; CFL1; CFL; p18; 18 kDa phosphoprotein; Cofilin1; Cofilin-1; 18 kDa phosphoprotein; Cofilin, non-muscle isoform; cofilin 1 (non-muscle)
Gene ID	1072
mRNA Refseq	NM_005507
Protein Refseq	NP_005498
MIM	601442
UniProt ID	P23528
Chromosome Location	11q13
Function	actin binding; protein binding

PDB rendering based on 1q8g.



 Tel: 1-631-559-9269 1-516-512-3133

 Email: info@creative-biomart.com  Fax: 1-631-938-8127

 45-1 Ramsey Road, Shirley, NY 11967, USA