

Recombinant Human CFL1 Protein, His-tagged

Cat. No. CFL1-768H **Lot. No.** (See product label)

SPECIFICATION

Product Overview	Recombinant Human CFL1 Protein (Ser3-Leu161) with His tag was expressed in E. coli.
Species	Human
Source	E.coli
ProteinLength	Ser3-Leu161
Description	The protein encoded by this gene can polymerize and depolymerize F-actin and G-actin in a pH-dependent manner. Increased phosphorylation of this protein by LIM kinase aids in Rho-induced reorganization of the actin cytoskeleton. Cofilin is a widely distributed intracellular actin-modulating protein that binds and depolymerizes filamentous F-actin and inhibits the polymerization of monomeric G-actin in a pH-dependent manner. It is involved in the translocation of actin-cofilin complex from cytoplasm to nucleus.
Form	Freeze-dried powder
Molecular Mass	Predicted Molecular Mass: 21.6 kDa; Accurate Molecular Mass: 22 kDa
Purity	> 95%
Applications	Cell culture; Activity Assays.

 Tel: 1-631-559-9269 1-516-512-3133

 Email: info@creative-biomart.com  Fax: 1-631-938-8127

 45-1 Ramsey Road, Shirley, NY 11967, USA

Stability	The thermal stability is described by the loss rate. The loss rate was determined by accelerated thermal degradation test, that is, incubate the protein at 37 centigrade for 48h, and no obvious degradation and precipitation were observed. The loss rate is less than 5% within the expiration date under appropriate storage condition.
Storage	Avoid repeated freeze/thaw cycles. Store at 2-8 centigrade for one month. Aliquot and store at -80 centigrade for 12 months.
Storage Buffer	20mM Tris, 150mM NaCl, pH8.0, containing 1mM EDTA, 1mM DTT, 0.01% SKL, 5% Trehalose and Proclin300.
Reconstitution	Reconstitute in 20mM Tris, 150mM NaCl (pH8.0) to a concentration of 0.1-1.0 mg/mL. Do not vortex.

GENE INFORMATION

Gene Name	CFL1 cofilin 1 (non-muscle) [Homo sapiens (human)]
Official Symbol	CFL1
Synonyms	CFL1; cofilin 1 (non-muscle); CFL; cofilin-1; p18; 18 kDa phosphoprotein; cofilin, non-muscle isoform;
Gene ID	1072
mRNA Refseq	NM_005507
Protein Refseq	NP_005498
MIM	601442

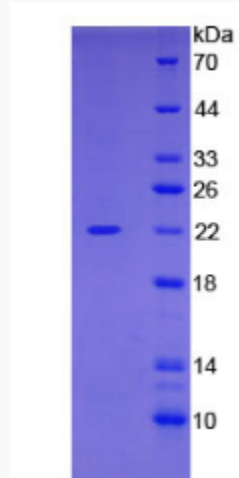
 Tel: 1-631-559-9269 1-516-512-3133

 Email: info@creative-biomart.com  Fax: 1-631-938-8127

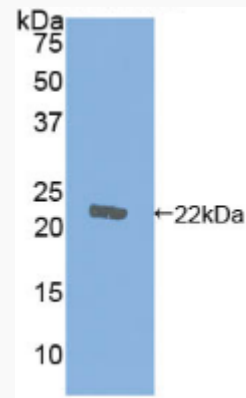
 45-1 Ramsey Road, Shirley, NY 11967, USA

UniProt ID

P23528



WB

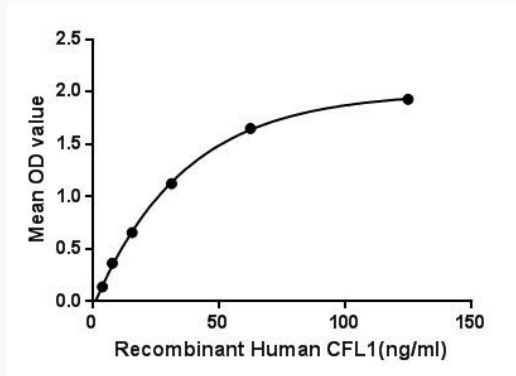


 Tel: 1-631-559-9269 1-516-512-3133

 Email: info@creative-biomart.com  Fax: 1-631-938-8127

 45-1 Ramsey Road, Shirley, NY 11967, USA

Binding activity



 Tel: 1-631-559-9269 1-516-512-3133

 Email: info@creative-biomart.com  Fax: 1-631-938-8127

 45-1 Ramsey Road, Shirley, NY 11967, USA