

Recombinant Human CFL2 Protein (Met1-Asn156), N-His tagged

Cat. No. CFL2-1003H Lot. No. (See product label)

SPECIFICATION

Product Overview	Recombinant Human CFL2 (Met1-Asn156) fused with the N-His tag was expressed in E. coli.
Species	Human
Source	E.coli
ProteinLength	Met1-Asn156
Form	Lyophilized powder/frozen liquid
Molecular Mass	20.02 kDa
Purity	>90% as determined by SDS-PAGE.
Notes	For research use only.
Storage	Use a manual defrost freezer and avoid repeated freeze thaw cycles. Store at 2 to 8 centigrade for one week. Store at -20 to -80 centigrade for twelve months from the date of receipt.
Storage Buffer	0.01M PBS, pH 7.4, 0.02% NLS
Reconstitution	Reconstitute in sterile water for a stock solution.

 Tel: 1-631-559-9269 1-516-512-3133

 Email: info@creative-biomart.com  Fax: 1-631-938-8127

 45-1 Ramsey Road, Shirley, NY 11967, USA

Shipping

They are shipped out with dry ice/blue ice unless customers require otherwise.

GENE INFORMATION
Gene Name

CFL2 cofilin 2 (muscle) [Homo sapiens (human)]

Official Symbol

CFL2

Synonyms

CFL2; cofilin 2 (muscle); cofilin-2; cofilin, muscle isoform; NEM7;

Gene ID

1073

mRNA Refseq

NM_001243645

Protein Refseq

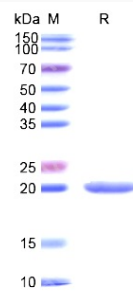
NP_001230574

MIM

601443

UniProt ID

Q9Y281

SDS-PAGE


Tel: 1-631-559-9269 1-516-512-3133

Email: info@creative-biomart.com Fax: 1-631-938-8127

45-1 Ramsey Road, Shirley, NY 11967, USA