

## Recombinant Human CFL2 Protein, GST-Tagged

**Cat. No.** CFL2-1174H    **Lot. No.** (See product label)

### SPECIFICATION

<b>Product Overview</b>	Human CFL2 full-length ORF (NP_068733.1, 1 a.a. - 166 a.a.) recombinant protein with GST-tag at N-terminal.
<b>Species</b>	Human
<b>Source</b>	Wheat Germ
<b>Description</b>	This gene encodes an intracellular protein that is involved in the regulation of actin-filament dynamics. This protein is a major component of intranuclear and cytoplasmic actin rods. It can bind G- and F-actin in a 1:1 ratio of cofilin to actin, and it reversibly controls actin polymerization and depolymerization in a pH-dependent manner. Mutations in this gene cause nemaline myopathy type 7, a form of congenital myopathy. Alternative splicing results in multiple transcript variants. [provided by RefSeq, Jul 2009]
<b>Molecular Mass</b>	45.1 kDa
<b>AA Sequence</b>	MASGVTVNDEVIKVFNDMKVRKSSTQEEIKKRKKAVLFCLSDDKRQIIVVEAKQILVG DIGD TVEDPYTSFVKLLPLNDCRYALYDATYETKESKKEDLVFIFWAPESAPLKSKMI YASSKDAIKKKFTGIKHEWQVNGLDDIKDRSTLGEKLGGNVVVSLEGKPL
<b>Applications</b>	Enzyme-linked Immunoabsorbent Assay Western Blot (Recombinant protein) Antibody Production Protein Array

 Tel: 1-631-559-9269    1-516-512-3133

 Email: [info@creative-biomart.com](mailto:info@creative-biomart.com)     Fax: 1-631-938-8127

 45-1 Ramsey Road, Shirley, NY 11967, USA

**Storage** Store at -80 centigrade. Aliquot to avoid repeated freezing and thawing.

**Storage Buffer** 50 mM Tris-HCl, 10 mM reduced Glutathione, pH=8.0 in the elution buffer.

## GENE INFORMATION

**Gene Name** CFL2 cofilin 2 (muscle) [ Homo sapiens ]

**Official Symbol** CFL2

**Synonyms** CFL2; cofilin 2 (muscle); cofilin-2; cofilin, muscle isoform; NEM7;

**Gene ID** 1073

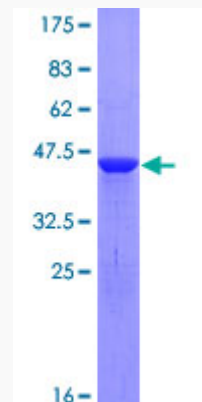
**mRNA Refseq** NM\_001243645

**Protein Refseq** NP\_001230574

**MIM** 601443

**UniProt ID** Q9Y281

**Quality Control Testing**



Tel: 1-631-559-9269 1-516-512-3133

Email: [info@creative-biomart.com](mailto:info@creative-biomart.com) Fax: 1-631-938-8127

45-1 Ramsey Road, Shirley, NY 11967, USA



12.5% SDS-PAGE Stained with Coomassie Blue.

 Tel: 1-631-559-9269 1-516-512-3133

 Email: [info@creative-biomart.com](mailto:info@creative-biomart.com)  Fax: 1-631-938-8127

 45-1 Ramsey Road, Shirley, NY 11967, USA