

# Recombinant Human CFL2 Protein, Myc/DDK-tagged, C13 and N15-labeled

**Cat. No.** CFL2-6639H    **Lot. No.** (See product label)

## SPECIFICATION

<b>Product Overview</b>	CFL2 MS Standard C13 and N15-labeled recombinant protein (NP_619579) with a C-terminal MYC/DDK tag, was expressed in HEK293 cells.
<b>Species</b>	Human
<b>Source</b>	HEK293
<b>Description</b>	This gene encodes an intracellular protein that is involved in the regulation of actin-filament dynamics. This protein is a major component of intranuclear and cytoplasmic actin rods. It can bind G- and F-actin in a 1:1 ratio of cofilin to actin, and it reversibly controls actin polymerization and depolymerization in a pH-dependent manner. Mutations in this gene cause nemaline myopathy type 7, a form of congenital myopathy. Alternative splicing results in multiple transcript variants.
<b>Molecular Mass</b>	18.7 kDa
<b>AA Sequence</b>	MASGVTVNDEVIKVFNDMKVVRKSSTQEEIKKRKKAVLFCLSDDKRQIIVEEAKQILVGDIGDTVEDPYTSFVKLLPLNDCRYALYDATYETKESKKEDLVFIFWAPESAPLKSKMIYASSKDAIKKKFTGIKHEWQVNGLLDDIKDRSTLGEKLGGNVVVSLEGKPLTRTRPLEQKLISEEDLAANDILDYKDDDDKV
<b>Purity</b>	> 80% as determined by SDS-PAGE and Coomassie blue staining
<b>Stability</b>	Stable for 3 months from receipt of products under proper storage and handling

 Tel: 1-631-559-9269    1-516-512-3133

 Email: [info@creative-biomart.com](mailto:info@creative-biomart.com)     Fax: 1-631-938-8127

 45-1 Ramsey Road, Shirley, NY 11967, USA

conditions.

**Storage** Store at -80 centigrade. Avoid repeated freeze-thaw cycles.

**Concentration** 50 µg/mL as determined by BCA

**Storage Buffer** 100 mM glycine, 25 mM Tris-HCl, pH 7.3.

## GENE INFORMATION

**Gene Name** CFL2 cofilin 2 [ Homo sapiens (human) ]

**Official Symbol** CFL2

**Synonyms** CFL2; cofilin 2 (muscle); cofilin-2; cofilin, muscle isoform; NEM7;

**Gene ID** 1073

**mRNA Refseq** NM\_138638

**Protein Refseq** NP\_619579

**MIM** 601443

**UniProt ID** Q9Y281

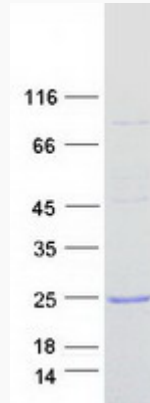
 Tel: 1-631-559-9269 1-516-512-3133

 Email: [info@creative-biomart.com](mailto:info@creative-biomart.com)  Fax: 1-631-938-8127

 45-1 Ramsey Road, Shirley, NY 11967, USA



SDS-PAGE



Tel: 1-631-559-9269 1-516-512-3133

Email: [info@creative-biomart.com](mailto:info@creative-biomart.com) Fax: 1-631-938-8127

45-1 Ramsey Road, Shirley, NY 11967, USA